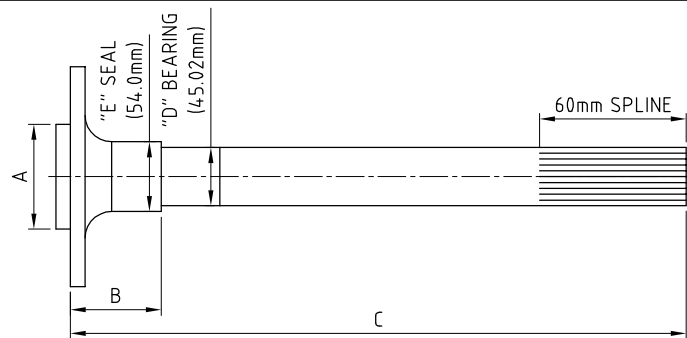
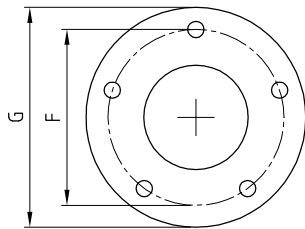


EXTRA LARGE BEARING 45.025mm 1541H INDUCTION HARDENED AXLE

BILLING ADDRESS	SHIPPING ADDRESS
-----------------	------------------

NAME: .....	NAME: .....
ADDRESS: .....	ADDRESS: .....
SUBURB: .....	SUBURB: .....
STATE: .....	STATE: .....
POSTCODE: .....	POSTCODE: .....
PHONE: .....	PHONE: .....
FAX: .....	
E-MAIL: .....	

### MEASURING FOR INDIVIDUAL AXLE LENGTHS



BRAKE TYPE : .....

BEARING END TYPE : .....

TYPE OF REAR END : .....

A : ..... B : .....

SPLINE COUNT : .....

D : ..... E : .....

STUD SIZE / TYPE : .....

F : ..... G : .....

DRIVERS SIDE DIMENSIONS:

MATERIAL
1541H
OFFICE USE

PASSENGERS SIDE DIMENSIONS:

MATERIAL
1541H
OFFICE USE

C : .....

C : .....

ADDITIONAL INFORMATION:

.....

.....

### STANDARD

- AXLE FLANGES DRILLED WITH 1" HOLE FOR ACCESS TO RETAINER BOLTS
- AXLE FLANGES DIAMETER "G" STANDARD = 160mm
- AXLES DRILLED & TAPPED TO ACCEPT SCREW IN STUDS (HIGHLY RECOMMENDED FOR THIS TYPE OF AXLE)
- 35 SPLINE AXLES HAVE SPLINE WITH 30° PRESSURE ANGLE (OPTION 45° PRESSURE ANGLE MARK WILLIAMS TYPE)
- 40 SPLINE AXLES HAVE SPLINE WITH 45° PRESSURE ANGLE
- ALL SPLINES ARE CUT TYPE
- MATERIAL :1541H INDUCTION HARDENED USA ALLOY AXLE
- AXLES ARE PACKAGED IN CARDBOARD BOXES FOR SAFE DELIVERY

### CONTACT DETAILS

ALTRA 9  
 UNIT 2-143 GRANITE STREET  
 GEEBUNG  
 QLD, 4034

- WHEN PLACING AN ORDER YOU AGREE TO OUR TERMS AND CONDITIONS
- TERMS AND CONDITIONS ARE AVAILABLE ON WEBSITE
- FULL PAYMENT IS REQUIRED BEFORE ORDER WILL BE PROCESSED

PHONE: (07) 3265 5200  
 FAX: (07) 3265 5155

#### PAYMENT METHODS

EFTPOS, CREDIT CARD, CASH, PERSONAL CHEQUE ( MUST CLEAR BEFORE GOODS ARE DESPATCHED ),  
 DIRECT DEPOSIT : ANZ, ALTRA 9 PTY LTD, BSB: 014 275 , ACCOUNT: 283 947 658

WEB: [www.altra9.com.au](http://www.altra9.com.au)  
 EMAIL: [info@altra9.com.au](mailto:info@altra9.com.au)