



AXLE ORDER FORM - 35 & 40 SPLINE

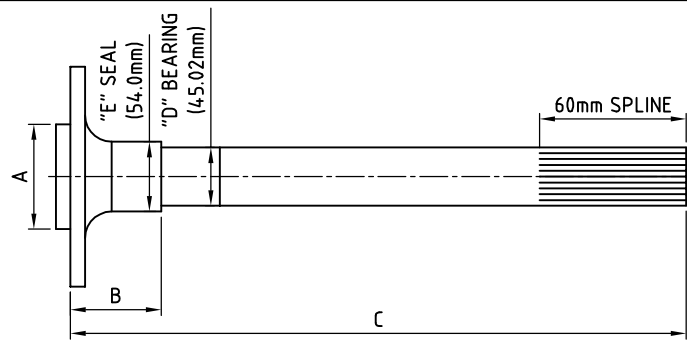
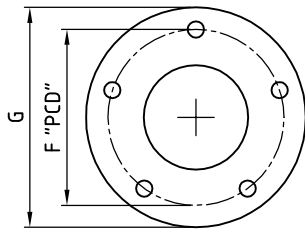
EXTRA LARGE BEARING 45.025mm 1541H INDUCTION HARDENED AXLE

OFFICE USE
SN:
INV:

BILLING ADDRESS	SHIPPING ADDRESS
-----------------	------------------

NAME:	NAME:
ADDRESS:	ADDRESS:
SUBURB:	SUBURB:
STATE:	STATE:
POSTCODE:	POSTCODE:
PHONE:	PHONE:
FAX:	
E-MAIL:	

MEASURING FOR INDIVIDUAL AXLE LENGTHS



BRAKE TYPE	:	A	:	B	:
BEARING END TYPE	:	D	:	E	:
TYPE OF REAR END	:	F	:	G	:
SPLINE COUNT	:	STUD PATTERN:					
STUD SIZE / TYPE	:						
HOLE / THREAD SIZE	:						

DRIVERS SIDE DIMENSIONS:

C :

MATERIAL
1541H
OFFICE USE

PASSENGERS SIDE DIMENSIONS:

C :

MATERIAL
1541H
OFFICE USE

ADDITIONAL INFORMATION:

.....

.....

STANDARD

- AXLE FLANGES DRILLED WITH 1" HOLE FOR ACCESS TO RETAINER BOLTS
- AXLE FLANGES DIAMETER "G" STANDARD = 160mm
- AXLES DRILLED & TAPPED TO ACCEPT SCREW IN STUDS (HIGHLY RECOMMENDED FOR THIS TYPE OF AXLE)
- 35 SPLINE AXLES HAVE SPLINE WITH 30° PRESSURE ANGLE (OPTION 45° PRESSURE ANGLE MARK WILLIAMS TYPE)
- 40 SPLINE AXLES HAVE SPLINE WITH 45° PRESSURE ANGLE
- ALL SPLINES ARE CUT TYPE
- MATERIAL :1541H INDUCTION HARDENED USA ALLOY AXLE
- AXLES ARE PACKAGED IN CARDBOARD BOXES FOR SAFE DELIVERY

CONTACT DETAILS

ALTRA 9
 UNIT 2 / 143 GRANITE STREET
 GEEBUNG QLD 4034

PHONE: (07) 3265 5200
 FAX: (07) 3265 5155
 WEB: www.altra9.com.au
 EMAIL: info@altra9.com.au

- WHEN PLACING AN ORDER YOU AGREE TO OUR TERMS AND CONDITIONS
- TERMS AND CONDITIONS ARE AVAILABLE ON WEBSITE
- FULL PAYMENT IS REQUIRED BEFORE ORDER WILL BE PROCESSED

PAYMENT METHODS

EFTPOS, CREDIT CARD(1.5% SURCHARGE), CASH,
 DIRECT DEPOSIT : ANZ, ALTRA 9 PTY LTD, BSB: 014 275 , ACCOUNT: 283 947 658