



# AXLE ORDER FORM - 28,31 & 35 SPLINE

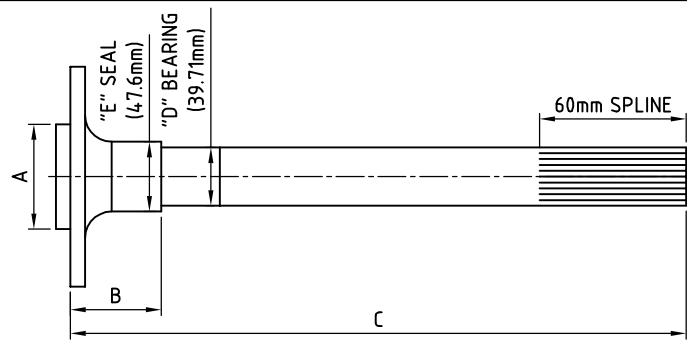
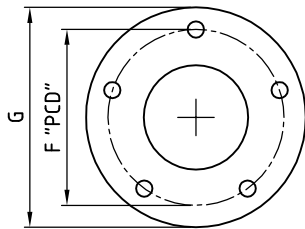
LARGE BEARING 39.71mm 4140 INDUCTION HARDENED AXLE

OFFICE USE
SN:
INV:

BILLING ADDRESS	SHIPPING ADDRESS
-----------------	------------------

NAME: .....	NAME: .....
ADDRESS: .....	ADDRESS: .....
SUBURB: .....	SUBURB: .....
STATE: .....	STATE: .....
POSTCODE: .....	POSTCODE: .....
PHONE: .....	PHONE: .....
FAX: .....	
E-MAIL: .....	

## MEASURING FOR INDIVIDUAL AXLE LENGTHS



BRAKE TYPE	:	.....	A	:	.....	B	:	.....
BEARING END TYPE	:	.....	D	:	.....	E	:	.....
TYPE OF REAR END	:	.....	F	:	.....	G	:	.....
SPLINE COUNT	:	.....	STUD PATTERN: .....					
STUD SIZE / TYPE	:	.....						
HOLE / THREAD SIZE	:	.....						

DRIVERS SIDE DIMENSIONS:

C : .....

MATERIAL
4140
OFFICE USE

PASSENGERS SIDE DIMENSIONS:

C : .....

MATERIAL
4140
OFFICE USE

ADDITIONAL INFORMATION:

.....

.....

## STANDARD

- AXLE FLANGES DRILLED WITH 1" HOLE FOR ACCESS TO RETAINER BOLTS
- AXLE FLANGES DIAMETER "G" STANDARD = 150mm
- AXLES DRILLED & TAPPED TO ACCEPT SCREW IN STUDS (HIGHLY RECOMMENDED FOR THIS TYPE OF AXLE)
- 28 & 31 SPLINE AXLES HAVE SPLINE WITH 45° PRESSURE ANGLE
- 35 SPLINE AXLES HAVE SPLINE WITH 30° PRESSURE ANGLE (OPTION 45° PRESSURE ANGLE MARK WILLIAMS TYPE)
- ALL SPLINES ARE CUT TYPE
- MATERIAL :4140 INDUCTION HARDENED USA ALLOY AXLE
- AXLES ARE PACKAGED IN CARDBOARD BOXES FOR SAFE DELIVERY

## CONTACT DETAILS

ALTRA 9  
 UNIT 2 / 143 GRANITE STREET  
 GEEBUNG QLD 4034

PHONE: (07) 3265 5200  
 FAX: (07) 3265 5155  
 WEB: www.altra9.com.au  
 EMAIL: info@altra9.com.au

- WHEN PLACING AN ORDER YOU AGREE TO OUR TERMS AND CONDITIONS
- TERMS AND CONDITIONS ARE AVAILABLE ON WEBSITE
- FULL PAYMENT IS REQUIRED BEFORE ORDER WILL BE PROCESSED

PAYMENT METHODS

EFTPOS, CREDIT CARD(1.5% SURCHARGE), CASH,  
 DIRECT DEPOSIT : ANZ, ALTRA 9 PTY LTD, BSB: 014 275 , ACCOUNT: 283 947 658