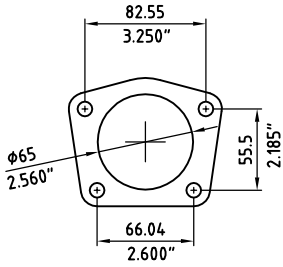
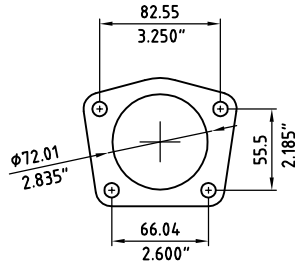


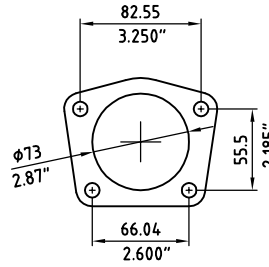
HOLDEN BEARING END DIMENSIONS



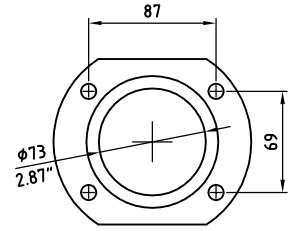
SMALL HOLDEN
A9-02-001



LARGE HOLDEN
A9-02-002

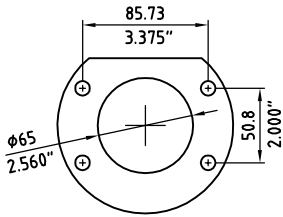


LARGE HOLDEN
A9-02-015
(SET10 BEARING)

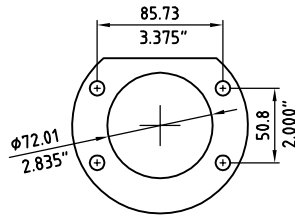


LARGE HOLDEN (VT-VZ)
A9-02-014
(SET10 BEARING)

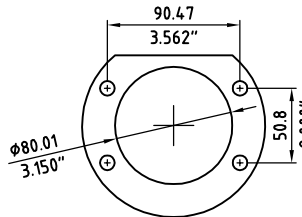
FORD BEARING END DIMENSIONS



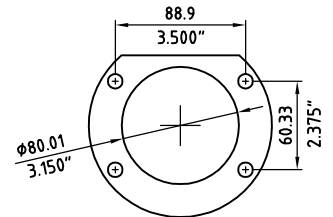
SMALL FORD
A9-02-003



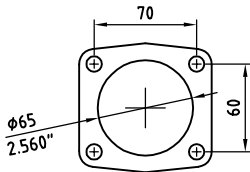
LARGE FORD
A9-02-004



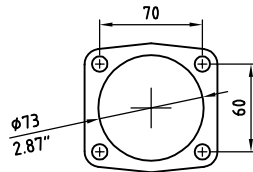
BIG FORD (NEW STYLE)
A9-02-005



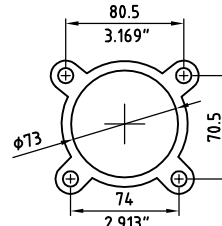
BIG FORD
A9-02-006



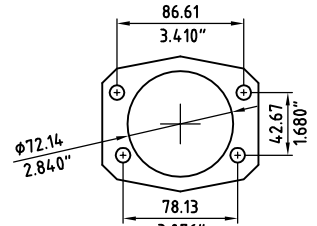
FORD AU/BA DISC
A9-02-007



FORD LARGE AU/BA DISC
A9-02-012
(SET 10 BEARING)

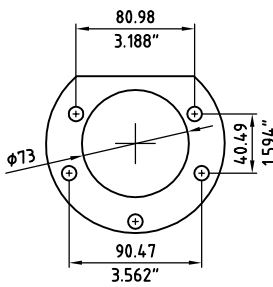


FORD XD DISC

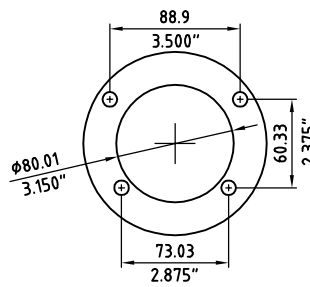


8.8" FORD

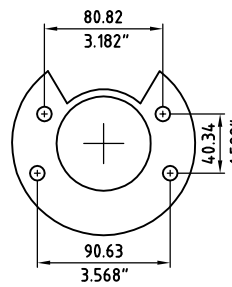
GENERAL BEARING END DIMENSIONS



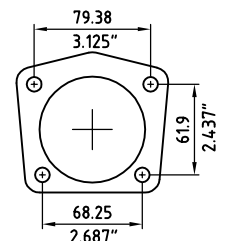
8 1/2 MOPAR DANA 60
A9-02-009
(9400M BEARING)



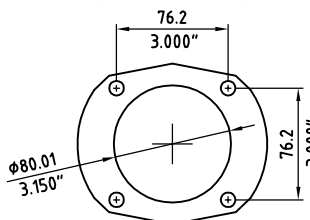
OLDS/PONTIAC



8 1/4 & 9 1/4 MOPAR



10 / 12 BOLT CHEVY
(EXCEPT IMPALA & TRUCK)



LAMB/SYMMETRICAL