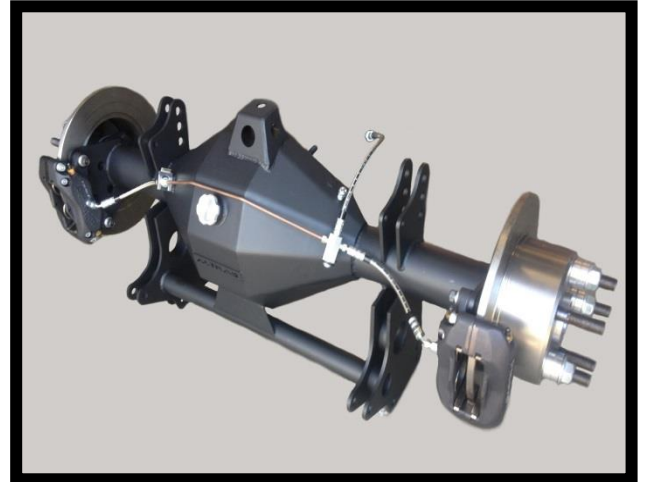


ALTRA9

REAR END COMPONENTS

HI-PERFORMANCE 9" FINAL DRIVE COMPONENTS



ALTRA9 PTY LTD
UNIT 2
143 GRANITE ST,
GEEBUNG, QLD 4034
P: 07 3265 5200
F: 07 3265 5155
E: info@altra9.com.au
ABN: 88 130 941 936

www.altra9.com.au



ALTRA 9 PTY LTD

WE CURRENTLY STOCK THE LARGEST RANGE OF USA MANUFACTURED FLANGED & FLOATER AXLES IN AUSTRALIA!

Since 2008, ALTRA 9 Rear End components has been working hard to become one of the Market leaders in High Performance 9" axles and rear end components for various racing applications.

ALTRA 9 is an Australian owned and operated company that has 20+ years of experience.

The company is headed by Darren who has trade qualifications in Boiler making as well as a degree in Mechanical Engineering. Darren has learnt all facets of the business from the ground up, starting as an apprentice boiler maker, fabricating custom suspension and rear end conversions for many street/race cars. His Engineering degree has also enabled ALTRA 9 to form its own "in house" design team, creating new products and checking all designs for their structural integrity.

ALTRA 9 machine axles or fabricate a complete disc to disc 9" conversion fully "in house," with no need to outsource any part of the job.

ALTRA 9 is also the "Number 1" seller of USA Manufactured axles in Australia and can supply you a complete rear end. The company prides itself in its ability to provide quality American made flanged and Floater axles at an affordable price, with a quick turnaround of approx. 10-15 business days.

We stock brand new USA manufactured alloy axles, housings and diff components, with a view to continue expanding our product range and services to meet the ever-growing needs of this industry.

The ALTRA 9 team are trade qualified persons and have a history of award-winning rear ends and quality "in house" manufactured/Fabricated products.

OUR TEAM

We have a team of highly skilled Qualified Tradesman who have 20+ years' experience that work for us. This ensures all of our products are finished to a very high degree of quality.

OUR PREMISES

We are located at Geebung on the Northside of Brisbane and stock a large range of products on the shelf at all times.

Over the past few years ALTRA 9 has added several items to its product range in an effort to offer a more complete range of driveline components. Ranging from Flanged and Floating axles to complete centre sections, to a complete disc to disc 9" conversion to suit a variety of street or race application.

WE SUPPLY AUSTRALIAN OR USA MADE PRODUCTS ONLY – NO CHEAP COPIES!

With the supply of OEM housing and componentry drying up, ALTRA 9 endeavour to manufacture brand new weld on housing and componentry to keep your dream alive!

CONTENTS

FLANGED AXLES	3-4	BRAKE COMPONENTS	17
FLOATER AXLES	4	SUSPENSION	18
AXLE COMPONENTS	5-6	SUSPENSION COMPONENTS	18
HOUSINGS	7	DRIVESHAFTS	19
HOUSING COMPONENTS	8-9	DRIVESHAFT COMPONENTS	19
3RD MEMBER	10	TOOLS	19
3RD MEMBER COMPONENTS	11-14	LUBRICANT / SEALANTS	20
FLOATER KITS	15	APPAREL	20
FLOATER COMPONENTS	15	SHOP SERVICES	20
BRAKE KITS	16	TERMS AND CONDITIONS	21

MISSION STATEMENT

To provide high quality products, with second to none customer service.

NOTE: Sample images only, actual product may vary.

FLANGED AXLES

FLANGED CUSTOM ALLOY AXLES - 28 & 31 SPLINE

These are USA manufactured hi-performance 1541 forged induction heat treated alloy axles supplied with cut splines and 10mm heavy duty flanges. Drilled to suit your stud pattern with an option of 7/16", 1/2", 5/8", M12 & M14 press in wheel studs or 1/2", M12 & 5/8" screw in studs.

A9-28-AXLE - AXLE FLANGED USA ALTRA 9 1541H 28 SPLINE (35.02mm) ACCESS HOLE - EACH
A9-31-AXLE - AXLE FLANGED USA ALTRA 9 1541H 31 SPLINE (35.02mm) ACCESS HOLE - EACH
D-28S-AXLE - AXLE FLANGED USA DUTCHMAN 1541 28 SPLINE (35.02mm) ACCESS HOLE - EACH
D-31S-AXLE - AXLE FLANGED USA DUTCHMAN 1541 31 SPLINE (35.02mm) ACCESS HOLE - EACH

FLANGED CUSTOM ALLOY RACE AXLES - 23, 25, 28 SPLINE

These are USA manufactured hi-performance 4140 Chrome moly forged induction heat treated alloy axles supplied with cut splines and 10mm heavy duty flanges. Drilled and tapped to suit your stud pattern with an option of 7/16", 1/2", 5/8", M12 screw in wheel studs.

A9-23S-870 - AXLE FLANGED USA ALTRA 9 4140 23 SPLINE (35.02mm) ACCESS HOLE - EACH
A9-25S-850 - AXLE FLANGED USA ALTRA 9 4140 25 SPLINE (35.02mm) ACCESS HOLE - EACH
A9-28S-870 - AXLE FLANGED USA ALTRA 9 4140 28 SPLINE (35.02mm) ACCESS HOLE - EACH

FLANGED CUSTOM ALLOY RACE AXLES - 30 SPLINE

These are USA manufactured hi-performance 1541 forged induction heat treated alloy axles supplied with cut splines and 10mm heavy duty flanges. Drilled to suit your stud pattern with an option of 7/16", 1/2", 5/8", M12 & M14 press in wheel studs or 1/2", M12 & 5/8" screw in studs.

D-30S-AXLE - AXLE FLANGED USA DUTCHMAN 1541 30 SPLINE (35.02mm) ACCESS HOLE - EACH

FLANGED CUSTOM ALLOY RACE AXLES - 28, 31 & 35 SPLINE

These are USA manufactured hi-performance 1541/4140 Chrome moly forged induction heat treated alloy axles supplied with cut splines and 10mm heavy duty flanges. Drilled to suit your stud pattern with an option of 7/16", 1/2", 5/8", M12 & M14 press in wheel studs or 1/2", M12 & 5/8" screw in studs.

A9-31L-870 - AXLE FLANGED USA ALTRA 9 4140 31 SPLINE (39.71mm) ACCESS HOLE - EACH
A9-35L-870 - AXLE FLANGED USA ALTRA 9 4140 35 SPLINE (39.71mm) ACCESS HOLE - EACH
D-28L-AXLE - AXLE FLANGED USA DUTCHMAN 1541 28 SPLINE (38.88mm) ACCESS HOLE - EACH
D-31L-AXLE - AXLE FLANGED USA DUTCHMAN 1541 31 SPLINE (39.71mm) ACCESS HOLE - EACH
D-31L-AXLE-5/8 - AXLE FLANGED USA DUTCHMAN 1541 31 SPLINE (39.71mm) ACCESS HOLE (SUIT 5/8" SCREW IN STUDS) - EACH
D-31LM-AXLE - AXLE FLANGED USA DUTCHMAN 4130 31 SPLINE (39.71mm) ACCESS HOLE - EACH
D-31LM-AXLE-5/8 - AXLE FLANGED USA DUTCHMAN 4130 31 SPLINE (39.71mm) ACCESS HOLE (SUIT 5/8" SCREW IN STUDS) - EACH
D-35L-AXLE - AXLE FLANGED USA DUTCHMAN 1541 35 SPLINE (39.71mm) ACCESS HOLE - EACH
D-35L-AXLE-5/8 - AXLE FLANGED USA DUTCHMAN 1541 35 SPLINE (39.71mm) ACCESS HOLE (SUIT 5/8" SCREW IN STUDS) - EACH
D-35LM-AXLE - AXLE FLANGED USA DUTCHMAN 4130 35 SPLINE (39.71mm) ACCESS HOLE - EACH
D-35LM-AXLE-5/8 - AXLE FLANGED USA DUTCHMAN 4130 35 SPLINE (39.71mm) ACCESS HOLE (SUIT 5/8" SCREW IN STUDS) - EACH

FLANGED CUSTOM ALLOY RACE AXLES - 30 SPLINE

These are USA manufactured hi-performance 1541 forged induction heat treated alloy axles supplied with cut splines and 10mm heavy duty flanges. Drilled to suit your stud pattern with an option of 7/16", 1/2", 5/8", M12 & M14 press in wheel studs or 1/2", M12 & 5/8" screw in studs.

D-30L-AXLE - AXLE FLANGED USA DUTCHMAN 1541 30 SPLINE (39.71mm) ACCESS HOLE - EACH

FLANGED CUSTOM FORD ALLOY RACE AXLES - 28 SPLINE

These are USA manufactured hi-performance 4140 Chrome moly forged induction heat treated alloy axles supplied with cut splines and 11mm heavy duty flanges. Drilled to suit your stud pattern with 1/2" press in wheel studs.

A9-28F-850 - AXLE FLANGED USA ALTRA 9 4140 28 SPLINE (37.02mm) ACCESS HOLE FORD BEARING - EACH

FLANGED CUSTOM ALLOY AXLES - 40 SPLINE

These are USA manufactured hi-performance 1541 forged induction heat treated alloy axles supplied with cut splines and 10mm heavy duty flanges. Drilled to suit your stud pattern with an option of 7/16", 1/2", 5/8", M12 & M14 press in wheel studs or 1/2", M12 & 5/8" screw in studs.

D-40L-AXLE-1/2 - AXLE FLANGED USA DUTCHMAN 1541 40 SPLINE (45.00mm) ACCESS HOLE (SUIT 1/2" SCREW IN STUDS) - EACH
D-40L-AXLE-5/8 - AXLE FLANGED USA DUTCHMAN 1541 40 SPLINE (45.00mm) ACCESS HOLE (SUIT 5/8" SCREW IN STUDS) - EACH

FLANGED CUSTOM ALLOY AXLE SPECIFICATIONS

- CNC machined from premium forged steel.
- Induction hardened to resist bending loads encountered with street/strip use.
- Harder bearing surface area than OEM – for improved bearing / axle life
- Deeper case hardening than OEM – for superior torsional strength
- Flanges thicker than OEM
- Fits OEM bearings
- Fully ground bearing and seal surfaces
- Splines cut to the proper involute form
- Stud patterns machined to your requirements.
- Manufactured in the USA

FLANGED AXLE TORQUE RATINGS

23 Spline – 2875 ft-lb (per axle)
25 Spline – 3750 ft-lb (per axle)
28 Spline – 4800 ft-lb (per axle)
30 Spline – 6200 ft-lb (per axle)
31 Spline – 7000 ft-lb (per axle)
33 Spline – 8200 ft-lb (per axle)
35 Spline – 9600 ft-lb (per axle)
40 Spline – 12000 ft-lb (per axle)

FORMULA FOR AXLE TORQUE

(Max torque of your car (ft-lb) x (gearbox first gear ratio) x (diff ratio) x 90% efficiency.

Each axle should be able to handle all of the maximum torque your car can produce. This will create a 200% safety factor.

Example: A car has 600 ft-lb of torque, Turbo 350 transmission (2.52 ratio 1st gear) and a 9" diff (4.11 ratio gears)

$$(600) \times (2.52) \times (4.11) \times 90\% = 5592 \text{ ft-lb}$$

Therefore it is recommended that you use a 31 Spline axle which has a Torque capacity of 7000 ft-lb



- IMPORTANT INFORMATION -

Under NO circumstances are ALTRA 9 and Dutchman Custom Alloy Axles to be welded or torched on any area. Welding or torching on a Custom Alloy Axle changes the structure of the metal and causes a stress riser that could cause axle failure, possibly resulting in accident or injury. Welding or torching of any kind, voids any and all replacement policies that may have been applicable. Axles supplied by ALTRA 9 for vehicles with cambered (bent) housings or using mini or full spools are "void of warranty" as this application applies extreme torque loads to the axles which may cause failure. ALTRA 9 axles will, at its sole discretion, repair or replace free of cost, any part found not to be of ordered, dimensional specifications, prior to assembly or use of parts. ALTRA 9 at its' discretion will repair, replace or refund the purchase price of the incorrect or defective product or component parts, provided the product in question is returned within a ninety (90) day period from the original purchase date listed on the original invoice. Proper documentation must be presented for the product in question, specifically the original invoice, or a copy thereof, presented by the original purchaser of the product. In addition, ALTRA 9 will not be responsible for damage due to accident or collision, abuse, misuse, or improper installation or service. In no event will ALTRA 9 be responsible for damage including but not limited to down time, lost profits, goodwill, damage to or replacement of equipment and property, loss of use, or cost of substituted products.

FLANGED AXLES

FLANGED TOYOTA LANDCRUISER 32 SPLINE REAR OEM REPLACEMENT AXLES

The Factory Toyota Rear Axles are well known for breaking under offroad conditions. Altra 9 has designed and tested a USA manufactured 4140 chrome molly replacement Rear Axle to solve this problem. Axles to suit the below Landcruiser models.

MODEL	YEAR	WORK MATE	GX	GXL
Single Cab-Chassis LC79 V8 Diesel	2007 onwards	✓	✓	✓
Double Cab-Chassis LC79 V8 Diesel	2007 onwards	✓	N/A	✓
Wagon LC76 V8 Diesel	2007 onwards	✓	N/A	✓
Troop Carrier LC78 Diesel	2007 onwards	✓	N/A	✓



A9-32LC-610 - AXLE 4140 32 SPLINE x 610mm 70 SERIES LAND CRUISER - EACH
A9-32LC-658 - AXLE 4140 32 SPLINE x 658mm 70 SERIES LAND CRUISER (WIDENED DIFF) - EACH
A9-32LC-910 - AXLE 4140 32 SPLINE x 910mm 70 SERIES LAND CRUISER - EACH
A9-32LC-958 - AXLE 4140 32 SPLINE x 958mm 70 SERIES LAND CRUISER (WIDENED DIFF) - EACH

FLOATER AXLES

FLOATER ALLOY AXLES - 31 & 35 SPLINE

These are USA manufactured hi-performance 4340 Chrome moly induction heat treated Floater alloy axles supplied with cut splines.

A9-31FL-AXLE - AXLE FLOATER USA ALTRA 9 4340 31-31 SPLINE - EACH
A9-35FL-AXLE - AXLE FLOATER USA ALTRA 9 4340 35-35 SPLINE - EACH

FLOATER ALLOY AXLE SPECIFICATIONS

- CNC machined from premium grade 4340 Chrome Moly steel
- Induction hardened to resist bending loads
- Splines cut to the proper involute form
- 3/8" UNF thread tapped on drive plate end
- Circlip groove machined on Drive plate end
- Circlip fitted
- Manufactured in the USA

FLOATER AXLE TORQUE RATINGS

31 Spline – 5500 ft-lb (per axle)
 35 Spline – 7000 ft-lb (per axle)

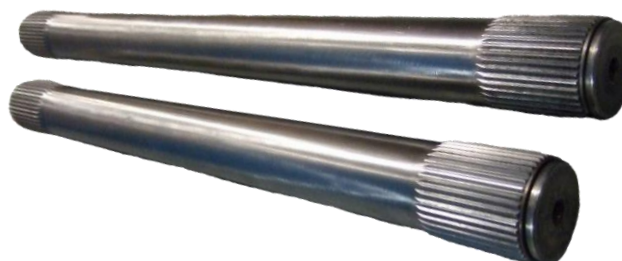
CUSTOM FLOATER ALLOY RACE AXLES – 28, 30, 31, 35 & 40 SPLINE

These are Australian manufactured hi-performance heat treated Floater axles supplied with cut splines.

A9-28-28FL-S - AXLE CUSTOM FLOATER 4340 28-28 SPLINE (604-350mm) - EACH
A9-28-28FL-L - AXLE CUSTOM FLOATER 4340 28-28 SPLINE (804-605mm) - EACH
A9-28-28FL-XL - AXLE CUSTOM FLOATER 4340 28-28 SPLINE (954-805mm) - EACH
A9-30-30FL-S - AXLE CUSTOM FLOATER 4340 30-30 SPLINE (604-350mm) - EACH
A9-30-30FL-L - AXLE CUSTOM FLOATER 4340 30-30 SPLINE (804-605mm) - EACH
A9-30-30FL-XL - AXLE CUSTOM FLOATER 4340 30-30 SPLINE (954-805mm) - EACH
A9-31-31FL-S - AXLE CUSTOM FLOATER 4340 31-31 SPLINE (604-350mm) - EACH
A9-31-31FL-L - AXLE CUSTOM FLOATER 4340 31-31 SPLINE (804-605mm) - EACH
A9-31-31FL-XL - AXLE CUSTOM FLOATER 4340 31-31 SPLINE (954-805mm) - EACH
A9-35-35FL-S - AXLE CUSTOM FLOATER 4340 35-35 SPLINE (604-350mm) - EACH
A9-35-35FL-L - AXLE CUSTOM FLOATER 4340 35-35 SPLINE (804-605mm) - EACH
A9-35-35FL-XL - AXLE CUSTOM FLOATER 4340 35-35 SPLINE (954-805mm) - EACH
A9-35-35FL-300-S - AXLE CUSTOM FLOATER 300M 35-35 SPLINE (604-350mm) - EACH
A9-35-35FL-300-L - AXLE CUSTOM FLOATER 300M 35-35 SPLINE (804-605mm) - EACH
A9-35-35FL-300-XL - AXLE CUSTOM FLOATER 300M 35-35 SPLINE (954-805mm) - EACH
A9-40-40FL-S - AXLE CUSTOM FLOATER EN26 40-40 SPLINE (604-350mm) - EACH
A9-40-40FL-L - AXLE CUSTOM FLOATER EN26 40-40 SPLINE (804-605mm) - EACH
A9-40-40FL-XL - AXLE CUSTOM FLOATER EN26 40-40 SPLINE (954-805mm) - EACH
A9-40-40FL-300M-S - AXLE CUSTOM FLOATER 300M 40-40 SPLINE (604-350mm) - EACH
A9-40-40FL-300M-L - AXLE CUSTOM FLOATER 300M 40-40 SPLINE (804-605mm) - EACH
A9-40-40FL-300M-XL - AXLE CUSTOM FLOATER 300M 40-40 SPLINE (904-805mm) - EACH
A9-40-40FL-300M-XXL - AXLE CUSTOM FLOATER 300M 40-40 SPLINE (1004-905mm) - EACH
A9-40-40FL-300M-XXXL - AXLE CUSTOM FLOATER 300M 40-40 SPLINE (1054-1005mm) - EACH
A9-40-40FL-300M-GD-S - AXLE CUSTOM FLOATER 300M 40-40 SPLINE (604-350mm) GUNDRILLED - EACH
A9-40-40FL-300M-GD-L - AXLE CUSTOM FLOATER 300M 40-40 SPLINE (754-605mm) GUNDRILLED - EACH

CUSTOM FLOATER ALLOY AXLE SPECIFICATIONS

- CNC machined from premium grade 4340, EN26, 300M steel
- Hardened to resist bending loads
- Splines cut to the proper involute form
- Thread tapped on drive plate end
- Circlip groove machined on Drive plate end
- Circlip fitted
- Manufactured in Australia



AXLE COMPONENTS

WHEEL STUDS

Wheel Studs, screw in/Press in Type – individually sold

CE9000C - WHEEL STUD, 1/2-20 X .610 KNURL X 1 15/16" PRESS IN - EACH
CE9000D - WHEEL STUD, 1/2-20 X .610 KNURL X 3" PRESS IN - EACH
CE9001 - WHEEL STUD, 7/16-20 X .610 KNURL X 1 11/16" PRESS IN - EACH
CE9002 - WHEEL STUD, M12 X 1.5 X .610 KNURL X 45mm PRESS IN - EACH
A9-09-002 - WHEEL STUD, 7/16-20 X 45 mm - SCREW IN - EACH
A9-09-003 - WHEEL STUD, 7/16-20 X 75mm - SCREW IN - EACH
A9-09-004 - WHEEL STUD, M12 X 1.25 X 45mm - SCREW IN - EACH
A9-09-005 - WHEEL STUD, M12 X 1.25 X 75mm - SCREW IN - EACH
CE9002A - WHEEL STUD, M14 X 1.5 X .630 KNURL X 50mm PRESS IN - EACH
CE9003A - WHEEL STUD, 7/16-20 X .480 KNURL X 3" PRESS IN - EACH
CE9021 - WHEEL STUD, 5/8-18 X .640 KNURL X 3" PRESS IN - EACH
CE9021S - WHEEL STUD, 5/8-18 X .685 KNURL X 2" PRESS IN - EACH
S141 - WHEEL STUD, 7/16"-20 X 12.2MM KNURL X 52.5MM PRESS-IN - EACH
S142 - WHEEL STUD, 7/16"-20 X 12.1MM KNURL X 40.5MM PRESS-IN - EACH
S1420 - WHEEL STUD, 7/16"-20 X 12.2MM KNURL X 72.0MM PRESS-IN - EACH
S214 - WHEEL STUD, 1/2-20 X 15.7mm KNURL X 49.1mm PRESS-IN - EACH
S218 - WHEEL STUD, 1/2-20 X 15.9mm KNURL X 43.9mm PRESS-IN - EACH
S222 - WHEEL STUD, 1/2-20 X 15.7mm KNURL X 49.0mm PRESS-IN - EACH
S2220 - WHEEL STUD, 1/2"-20 X 15.7mm KNURL X 75.0mm PRESS-IN - EACH
S223 - WHEEL STUD, 1/2-20 X 15.7mm KNURL X 47.9mm PRESS-IN - EACH
S226 - WHEEL STUD, 1/2"-20 X 15.7mm KNURL X 59.6mm PRESS-IN - EACH
S2230 - WHEEL STUD, 1/2-20 X 15.7mm KNURL X 68.0mm PRESS-IN - EACH
S3400 - WHEEL STUD, M12x1.50 X 14.4mm KNURL X 73.0mm PRESS-IN - EACH
S343 - WHEEL STUD, M12x1.50 X 13.0mm KNURL X 40.0mm PRESS-IN - EACH
S457 - WHEEL STUD, M12x1.25 X 12.9mm KNURL X 43.8mm PRESS-IN - EACH
S612 - WHEEL STUD, M14x1.5 X 15.7mm KNURL X 58mm PRESS-IN (VE COMMODORE) - EACH
S6120 - WHEEL STUD, M14x1.5 X 15.7mm KNURL X 73mm PRESS-IN (VE COMMODORE) - EACH
STR-A1027A - STRANGE WHEEL STUD 5/8" x 3" LONG SCREW IN STUD - EACH



WHEEL STUDS KITS

Complete screw in stud kit.

STR-A1025 - STRANGE WHEEL STUD KIT 1/2" x 2" LONG SCREW IN STUDS - KIT
STR-A1026 - STRANGE WHEEL STUD KIT 1/2" x 3" LONG SCREW IN STUDS - KIT
STR-A1027 - STRANGE WHEEL STUD KIT 5/8" x 3" LONG SCREW IN STUDS - KIT
STR-A1035 - STRANGE WHEEL STUD KIT M12 x 1.5 x 50mm LONG SCREW IN STUDS - KIT
STR-A1037 - STRANGE WHEEL STUD KIT 5/8" x 2.875" LONG SCREW IN STUDS - KIT
STR-A1039 - STRANGE WHEEL STUD KIT 5/8" x 3.5" LONG SCREW IN STUDS - KIT
STR-A1041 - STRANGE WHEEL STUD KIT 5/8" x 3.188" LONG SCREW IN STUDS
MSR-8080 - MOSER WHEEL STUD KIT 5/8" X 3" LONG SCREW IN STUDS - KIT
MSR-8080S - MOSER WHEEL STUD KIT 5/8" X 2" LONG SCREW IN STUDS - KIT



WHEEL NUTS

Wheel Nuts – individually sold

A9-09-010 - WHEEL NUT OPEN OEM TYPE ZINC PLATED 7/16" THREAD - EACH
A9-09-011 - WHEEL NUT OPEN OEM TYPE ZINC PLATED 1/2" THREAD - EACH
A9-09-012 - WHEEL NUT OPEN OEM TYPE ZINC PLATED 12mm x 1.25 THREAD - EACH
A9-09-013 - WHEEL NUT OPEN OEM TYPE ZINC PLATED 12mm x 1.50 THREAD - EACH
A9-09-014 - WHEEL NUT OPEN OEM TYPE ZINC PLATED 5/8" UNF THREAD - EACH
STR-A1027D - STRANGE STUD 5/8" NUT FOR 1027 KIT - EACH



STRANGE STUD SLEEVE

Strange screw on 5/8" sleeves.

STR-A1027C - STRANGE STUD SLEEVE FOR 1027 KIT - EACH



STRANGE STUD SLEEVE WRENCH

Stud sleeve installation wrench.

STR-A1027B - STRANGE STUD SLEEVE WRENCH FOR 1027 KIT - EACH



STRANGE STUD WASHERS

Steel flat washers to suit 1/2" or 5/8" screw in studs

STR-A1027E - 5/8" WASHERS TO SUIT SCREW IN STUDS - EACH
STR-A1028B - 1/2" x 0.500" WASHERS TO SUIT SCREW IN STUDS - EACH



WHEEL NUT ALUMINIUM WASHER

CNC Machined aluminium wheel nut spacers to suit 5/8" wheel studs

STR-A1027F - STRANGE STUD 5/8" WASHER X 0.250" THICK - EACH
STR-A1027G - STRANGE STUD 5/8" WASHER X 0.438" THICK - EACH
STR-A1027H - STRANGE STUD 5/8" WASHER X 0.688" THICK - EACH



BEARING RETAINERS

Heavy duty bearing retainers, CAD designed laser cut using 5mm plate.

Zinc plated finish to prevent corroding.

A9-01-001 - 5mm BEARING RETAINER HOLDEN SMALL - EACH
A9-01-002 - 5mm BEARING RETAINER HOLDEN LARGE - EACH
A9-01-003 - 5mm BEARING RETAINER FORD SMALL - EACH
A9-01-004 - 5mm BEARING RETAINER FORD LARGE - EACH
A9-01-005 - 5mm BEARING RETAINER FORD BIG - EACH
A9-01-006 - 5mm BEARING RETAINER FORD XD DISC BRAKE - EACH
A9-01-007 - 3mm BEARING RETAINER FORD AU/BA DISC BRAKE - EACH
A9-01-008 - 3mm BEARING RETAINER FORD AU/BA DISC BRAKE (9507T) - EACH
A9-01-009 - 3mm BEARING RETAINER FORD AU/BA DISC (U399) SET 10 - EACH
A9-01-010 - 5mm BEARING RETAINER MOPAR/JEEP (U399) SET 10- EACH
A9-01-011 - 5mm BEARING RETAINER VT-VZ COMMODORE (9507T) - EACH
A9-01-012 - 5mm BEARING RETAINER VT-VZ COMMODORE (U399) - EACH
A9-01-013 - 4mm BEARING RETAINER HOLDEN BRAKE (LC-LJ, HK-HT DRUM) - EACH
A9-01-014 - 4mm BEARING RETAINER HOLDEN DISC BRAKE (LC-LJ, HK-HT VN-VS DISC) - EACH
A9-01-015 - 4mm BEARING RETAINER HOLDEN DISC BRAKE (U399 VN-VS DISC) - EACH
A9-01-016 - 5mm BEARING RETAINER FORD BIG NEW STYLE WILWOOD BRAKE - EACH
A9-01-017 - 5mm BEARING RETAINER FORD BIG WILWOOD BRAKE - EACH
A9-01-018 - 5mm BEARING RETAINER FORD BIG (10" & 11" DRUM BRAKES)
A9-01-019 - 5mm BEARING RETAINER FORD SMALL (84x51x10.5 HOLE) 53 DIA - EACH
A9-01-020 - 5mm BEARING RETAINER FORD BIG (89x60x14 HOLE) 70 DIA - EACH
A9-01-021 - 5mm BEARING RETAINER VALIANT (76x52x10.5 HOLE) 54 DIA - EACH
250-6287 - 5mm BEARING RETAINER LARGE FORD WILWOOD BRAKE KIT - EACH
250-11223 - 5mm BEARING RETAINER BIG FORD (NEW STYLE) WILWOOD BRAKE KIT - EACH



AXLE COMPONENTS

T BOLTS & FASTENERS

Superior quality exceeds original factory specifications. Finished in black oxide. Replaces standard T Bolts.

CE2012T - 3/8" HOUSING END T BOLT x 36mm long - EACH
95041-L - 3/8" HOUSING END T BOLT x 44mm long - EACH
CE2010E - 1/2" HOUSING END T-BOLT x 38mm long - EACH
A9-08-003 - AU/BA FALCON FASTENERS - EACH
A9-08-010 - FORD ROTOR FASTENER SCREW - EACH

T BOLT NUTS

T-bolt locking nuts.

A9-08-001 - A9 T BOLT NUTS 3/8" - EACH
A9-08-002 - A9 T BOLT NUTS 1/2" - EACH

T BOLT & NUTS KIT

3/8" Axle housing end fasteners, T-bolt & nut kit

STR-H1133STKIT - 3/8" HOUSING END T-BOLTS & NUTS - KIT

FLOATER AXLE CIRCLIP

External circlips to suit 31, 35 and 40 spline floater axles

A9-17-001 - CIRCLIP FOR 31 SPLINE FLOATER - EACH
A9-17-002 - CIRCLIP FOR 35 SPLINE FLOATER - EACH
A9-17-003 - CIRCLIP FOR 40 SPLINE FLOATER - EACH

AXLE BEARINGS KITS

Heavy duty axle bearing kits include heavy duty wheel bearings, oil seals and bearing retainers (if applicable)

2739 - AXLE BEARING TIMKEN #T2739 - EACH
2765 - AXLE BEARING TIMKEN #2765 - EACH
2769 - AXLE BEARING TIMKEN #2769 - EACH
2773 - AXLE BEARING TIMKEN #2773 - EACH
2848 - AXLE BEARING TIMKEN #2848 - EACH
2981 - AXLE BEARING TIMKEN #2981 - EACH
2985 - AXLE BEARING TIMKEN #T2985 - EACH
2986 - AXLE BEARING TIMKEN #2986 - EACH
3029 - AXLE BEARING TIMKEN #3029 - EACH
88128R - AXLE BEARING 88128R (80X39X27) F100 - EACH
9400M - AXLE BEARING GREENS #9400M (MOPAR) W/O SNAP RING - EACH
9507B - AXLE BEARING GREENS #9507B - EACH
9507T - AXLE BEARING GREENS #9507T - EACH
9508B - AXLE BEARING GREENS #9508B - EACH
9508T - AXLE BEARING GREENS #9508T - EACH
A9-05-015 - AXLE BEARING SEALED 3.15" x 1.377" (80mm X 35mm) - EACH
CE8000A - AXLE BEARING - SEALED TYPE (80MM OD X 45MM ID) - EACH
CE8015A - AXLE BEARING MILITARY TAPERED BEARING SET 80 U497 (80MM OD X 45MM ID)
RW207CC - AXLE BEARING TIMKEN #RW207CC - EACH
SET 10 - AXLE BEARING TIMKEN #U399 (SET10) - EACH
SET 20 - AXLE BEARING TIMKEN #3036 (SET 20) - EACH
STR-A1021 - AXLE BEARING STRANGE 3.150" x 1.562" SEALED TYPE - EACH

AXLE BEARING RETAINERS

Heavy duty axle bearing retainers, press on type

A9-05-020 - AXLE BEARING RETAINER (34.85) DIA - EACH
A9-05-021 - AXLE BEARING RETAINER (36.85) DIA - EACH
A9-05-022 - AXLE BEARING RETAINER (34.85) DIA #107-R - EACH
A9-05-023 - AXLE BEARING RETAINER (39.60) DIA - EACH
A9-05-024 - AXLE BEARING RETAINER (39.65) DIA BT - EACH
A9-05-025 - AXLE BEARING RETAINER (39.65) DIA A9 - EACH
A9-05-026 - AXLE BEARING RETAINER (34.85) DIA A9 - EACH
K525376 - AXLE BEARING RETAINER (34.85) TIMKEN 16.55mm WIDE X 48.30mm O.D - EACH

AXLE BEARING SEALS

Axle bearing seals

8695S - AXLE SEAL 8695-S NATIONAL - EACH
9569S - AXLE SEAL 9569-S NATIONAL - EACH
GM-92146532 - VT-VZ CREWMAN REAR AXLE SEAL- EACH
W15025031 - AXLE SEAL W15025031 NATIONAL F100 - EACH
W13620843 - AXLE SEAL FORD 8" NATIONAL 51322 - EACH
W18731593 - AXLE SEAL W18731593 NATIONAL SUIT SET 20 BEARING - EACH

AXLE BEARING O-RING

Bearing O-Rings

BS146 - O-RING (SUIT GREENS 9507 & 9508 BEARINGS) - EACH

SPACERS

CAD designed laser cut or CNC machined using mild steel.

A9-03-001 - SPACER FORD BACKING PLATE SPACER (ZINC PLATED) - EACH
A9-03-002 - SPACER FORD BEARING (ZINC PLATED) - EACH
A9-03-003 - SPACER 72mm BEARING - EACH
A9-03-005 - SPACER DRUM BOSE - EACH
A9-03-006 - SPACER FORD GREENS BEARING 72mm - EACH
A9-03-007 - SPACER HOLDEN DISC BRAKE - EACH

A9 AXLE BEARING JOURNAL SPACER

AXLE bearing journal spacers

A9-03-008 - AXLE BEARING JOURNAL SPACERS - 35.02mm - EACH
A9-03-009 - AXLE BEARING JOURNAL SPACERS - 39.71mm - EACH

WHEEL SPACERS

Aluminium wheel spacers

WS3000 - WHEEL SPACER: 4-5 STUD 3mm THICK - PAIR
WS4000 - WHEEL SPACER: 4 STUD 6mm THICK - PAIR
WS5000 - WHEEL SPACER: 5 STUD 8mm THICK - PAIR
WS6000 - WHEEL SPACER: 5-6 STUD 6mm THICK - PAIR

ABS RING

ABS axle sensor disc.

AU2C205L - AU-FG FALCON ABS SENSOR RING - EACH

ABS AXLE COLLAR PRESS ON

AU/BA Ford Falcon ABS axle sensor disc mounting flange. Suits A9 axles only.

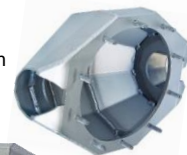
A9-20-001 - AU/BA ABS AXLE COLLAR PRESS ON 42.0mm BEARING JOURNAL - EACH
A9-20-003 - AU/BA ABS AXLE COLLAR PRESS ON 47.6mm BEARING JOURNAL - EACH



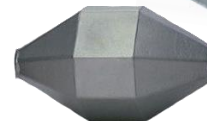
HOUSINGS

FABRICATED HOUSING – MILD STEEL

Currie USA F9 housing includes fabricated housing centre that features a 3/16" thick Hi-Form 50 steel body, 3/8" thick Hi-Form 50 steel 3rd. member mounting face, Welded in bulkheads inside the housing centre that tie the face, the body, and the inner ends of the tubes all together. Machined flat on one side of the inner end of the tube which allows it to key into the inner bulkhead before welding. Made in the USA!, Suits 3.25" Tube, Housing Studs Fitted.



Dutchman USA Fabricated XHD D-Fab 9 new 9" housing is designed for Hi performance street, track, and offroad cars or trucks. Dutchman's "D-Fab 9" housing is the ultimate in 9 inch Ford steel housing strength. Made in the USA! Suits 3" Tube, Housing Studs Fitted.



CE4304 - F9 FABRICATED HOUSING WITH STUDS - 3.25" NO TUBES - EACH
H71 - DMI FORD 9" HOUSING XHD-D-FAB 9 (SUIT 3" TUBES)- EACH

DUTCHMAN ROADSTER HOUSING

Dutchman USA Roadster Housing is similar to the early style 9-inch Ford stock housing (nearly extinct) Roadster Round Back new 9" housing is an affordable housing designed for those who want a "clean" look when the rear shows from the back. Good for lower horse power street rods, cruisers, and pickups. Made in the USA! Suits 3" Tube, Housing Studs Fitted.



H65 - DMI FORD 9" HOUSING ROUND BACK ROADSTER (SUIT 3" TUBES)- EACH

DUTCHMAN NOTCH BACK HOUSING – STOCK STYLE COVER

Dutchman USA Notch back HD Street & Track new 9" housing is designed for performance street and track cars or trucks. If you feel the need for speed, then this may be the performance rear end housing for you. Made in the USA! Suits 3" Tubes, Housing Studs Fitted.



H67 - DMI FORD 9" HOUSING NOTCHBACK H/D STREET-TRACK (SUIT 3" TUBES)- EACH

DUTCHMAN ROUND BACK HOUSING - SMOOTH COVER

Dutchman USA Round back HD Street & Track new 9" housing is designed for performance street and track cars or trucks. If you feel the need for speed, then this may be the performance rear end housing for you. Made in the USA! Suits 3" Tubes, Housing Studs Fitted.



H69 - DMI FORD 9" HOUSING ROUND BACK H/D STREET-TRACK (SUIT 3" TUBES)- EACH

ALUMINIUM FORD 9" HOUSING

Currie USA Aluminium Ford 9" housing with drain plug. Great for your Next Hot Rod Build.

Made in the USA! 3" steel axle tubes (bolt in type) Fitted, Housing Studs Fitted.

CE2011P - ALUMINIUM HOUSING WITH TUBES - POLISHED – EACH



DUTCHMAN IRS ALUMINIUM HOUSING

Dutchman USA Ford 9" IRS Aluminium Housing and axles.

Dutchman have Engineered the Housing with Extra Thick Cross Sections for added Strength.

Without Sacrificing Strength, the independent housing has a lightweight design (Only 20 Lbs.).

Their New, fourth generation castings are poured and heat-treated in The United States, at a Foundry that utilizes

modern state-of-the-art equipment and "old-school know how". The combination of Engineering and the best

Production methods available has resulted in one of the strongest aluminum independent housings in the aftermarket

Automotive Industry. The stub shafts are designed for the Porsche 930 or extra heavy duty 934 constant velocity

joint and are CNC machined using forged, double heat-treated 4340 chromoly material. for added strength and

durability, the stub axles are supported using a Timken taper roller bearing (instead of the typical single row ball bearing

their competitors use). Inner stub flange face to face measures 14 3/4" (one of the narrowest in the industry).

Custom Made CV Shafts, Made To Order. Multiple Mounting Hardware Options.

DIRS-35-934 - DUTCHMAN USA IRS ALUM HOUSING 35 SPLINE / 934 AXLES

DIRS-35-934-COOLER - DUTCHMAN USA IRS ALUM HOUSING 35 SPLINE / 934 AXLES WITH COOLER

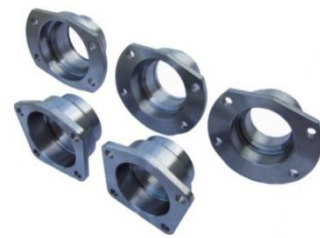


HOUSING COMPONENTS

BEARING ENDS

Bearing ends CAD designed and CNC machined. Heavy duty construction compared with standard type bearing ends. Machined to suit 3" axle tubes. Australian or USA made.

- A9-02-001 - BEARING END HOLDEN SMALL 65 DIA BEARING - EACH
- A9-02-002 - BEARING END HOLDEN LARGE 72 DIA BEARING - EACH
- A9-02-003 - BEARING END FORD SMALL 65 DIA BEARING - EACH
- A9-02-004 - BEARING END FORD LARGE 72 DIA BEARING - EACH
- A9-02-004B - BEARING END FORD LARGE 72 DIA BEARING BLANK - EACH
- A9-02-005 - BEARING END FORD BIG 80 DIA BEARING (NEW STYLE) - EACH
- A9-02-006 - BEARING END FORD BIG 80 DIA BEARING - EACH
- A9-02-007 - BEARING END AU/BA FORD 65 DIA BEARING - EACH
- A9-02-009 - BEARING END MOPAR/JEEP SET 10 BEARING - EACH
- A9-02-011 - BEARING END FORD LARGE 72 DIA BEARING (EA/EB DISC BRAKE) - EACH
- A9-02-011B - BEARING END FORD LARGE 72 DIA BEARING (EA/EB DISC BRAKE) BLANK - EACH
- A9-02-012 - BEARING END AU/BA FORD 73 DIA BEARING (U399) - EACH
- A9-02-014 - BEARING END HOLDEN LARGE 73 DIA U399 BEARING (VT-VZ DISC BRAKE) - EACH
- A9-02-015 - BEARING END HOLDEN LARGE 73 DIA (U399) - EACH



SPACERS

CAD designed laser cut or CNC machined using mild steel.

- A9-03-020 - SPACER HOLDEN SMALL/LARGE 3MM BACKING PLATE SPACER- EACH
- A9-03-021 - SPACER FORD SMALL/LARGE 3MM BACKING PLATE SPACER - EACH
- A9-03-022 - SPACER FORD BIG 3MM BACKING PLATE SPACER (NEW STYLE) - EACH
- A9-03-023 - SPACER FORD BIG 3MM BACKING PLATE SPACER - EACH
- A9-03-030 - SPACER HOLDEN SMALL/LARGE 2MM BACKING PLATE SPACER - EACH

SPRING SADDLES

Heavy duty spring saddles, CAD designed laser cut using 5mm plate.

- A9-04-001 - SPRING SADDLE HOLDEN 65 WIDE X 114 LONG 10 DIA - EACH
- A9-04-002 - SPRING SADDLE FORD 76 WIDE X 124 LONG 36 DIA - EACH
- A9-04-003 - SPRING SADDLE 57 WIDE X 114 LONG 13 DIA - EACH
- A9-04-004 - SPRING SADDLE 52 WIDE X 114 LONG 13 DIA - EACH
- CE7000G - SPRING SADDLE GM MONO LEAF NOVA/CAMARO - EACH
- CE7000M - SPRING SADDLE FORD MUSTANG 64-66 REPRODUCTION - EACH
- CE7000H - SPRING SADDLE GM MULTI LEAF NOVA/CAMARO - EACH

9-PLUS REAR COVERS FOR 9-PLUS HOUSING

Our rear covers are stamped from premium forming steel and are available in two styles.

- CE2001CR - EARLY STYLE REAR COVER (ROUND BACK) - EACH
- CE2001CN - LATE STYLE REAR COVER (NOTCH BACK) - EACH

9+ HOUSING STUDS

3/8" x 1.75" Fits all 9-Plus and stock housings. Exceeds OEM specifications.

- CE9000E - HOUSING STUD 3/8" - EACH
- CE-STUD-HSG - HOUSING STUD TO SUIT F9 & ALUMINIUM CURRIE HOUSINGS - EACH

GASKETS - 3RD MEMBER

HD gasket material and metal/rubber coated/sealant beading

- CE8009 - HD GASKET MATERIAL- EACH
- CE8009B - FORD 9" GASKET METAL/RUBBER COATED/SEALANT BEADING - EACH
- DG013 - BORG WARNER 75/78 SERIES DIFF COVER GASKET (WITH DRAIN) - EACH
- FORD6 - BORG WARNER 75/78 SERIES DIFF COVER GASKET (NO DRAIN) - EACH
- STR-H1111S - FORD 9" 3RD MEMBER GASKET SILICONE/METAL - EACH

NUTS & WASHERS FOR 3RD MEMBERS

Aircraft style locking nuts and sealing washers.

- CE9007 - 3RD MEMBER NUTS & WASHERS - SET OF 10

VENT CAP

Rear end vent has 1/8 NPT thread and features a floating cap.

- CE9028 - VENT WITH CAP EACH 1/8" NPT - EACH

DRAIN PLUG

This weld-in bung incorporates a standard hex steel plug.

- CE9027S - DRAIN PLUG - WELD-IN BUNG WITH STEEL PLUG 1/2" BSP THREAD - EACH
- H56 - DUTCHMAN USA - DRAIN PLUG 1/2" BSP - EACH

VENTS

Rear end vents threaded and features a hose barb

- CE9028N - VENT NIPPLE- BRASS TYPE 1/8" NPT THREAD X 3/8" TUBE - EACH
- DBF65 - DIFF HOUSING BREATHER SUIT FACTORY FORD BARB TYPE - 7/16" UNF THREAD - EACH

HOUSING FILLER PLUG

Weld on steel filler plug base with 1 1/4" UNC aluminium filler plug.

- A9-19-001 - FILLER PLUG - ALUMINIUM FILLER PLUG & STEEL WELD ON BOSE - EACH

HOUSING TUBES

Housing tubes.

- A9-07-004 - HOUSING TUBES 3.25"x 0.250" W.T DOM PIPE X 530mm LONG - EACH
- A9-07-007 - HOUSING TUBES 76.2MM X 4.90MM W.T DOM PIPE X 530MM LONG - EACH
- A9-07-008 - HOUSING TUBES 76.2MM X 6.40MM W.T DOM PIPE X 530MM LONG - EACH

U-BOLTS

Sturdy 8" long U-Bolts include washers and nuts.

- CE9019S - U-BOLT WITH NUTS & WASHERS - 3" ID, 1/2"- 20, 8" LONG - SET OF 4
- CE9017 - U-BOLT, WITH NUTS & WASHERS - 2.75" ID, 1/2-20, 8" LONG - SET OF 4
- CE9020 - U-BOLT, WITH NUTS & WASHERS - 3.25" ID, 1/2-20, 8" LONG - SET OF 4

U-BOLT BASE PLATES

10mm laser cut base plates with 10 mm centre bolt hole universal fitment for 3" or 3.25" U-Bolts

- A9-07-014 - U-BOLT BASE PLATE FOR 65mm SPRINGS - EACH
- A9-07-015 - U-BOLT BASE PLATE FOR 76mm SPRINGS - EACH
- A9-07-016 - U-BOLT BASE PLATE SHOCK MOUNT PLATE WELD ON TYPE - EACH
- A9-07-021 - U-BOLT BASE PLATE FOR 52mm SPRINGS - EACH
- A9-07-022 - U-BOLT BASE PLATE FOR 57mm SPRINGS - EACH
- CE7006 - U-BOLT BASE PLATE FOR 1964-1973 MUSTANG - PAIR



HOUSING COMPONENTS

REAR DIFF BRACE

Ford 9" rear diff brace

A9-07-030 - FORD 9" REAR DIFF BRACE - ROUND BACK HOUSING (1000mm)
A9-07-031 - FORD 9" REAR DIFF BRACE - NOTCH BACK HOUSING (1000mm)



BUMP STOP

Black urethane bump stop with 3/8" UNC x 3/4" long thread and lock nut

A9-07-020 - HOUSING SADDLE FOR BUMPSTOP 65mm WIDE - EACH
CE7011BS - BUMP STOP URETHANE - PAIR



COIL OVER SHOCK BRACKETS

Heavy duty coil over shock mounting brackets, CAD designed laser cut using 5mm plate. 7/16" holes with 1" adjustments.

A9-07-010 - BRACKET HOUSING BOTTOM BRACE TYPE - EACH
A9-07-011 - BRACKET HOUSING BOTTOM 3" TUBE TYPE - EACH
A9-07-012 - BRACKET HOUSING BOTTOM ADJUSTABLE STANDARD TYPE - PAIR
A9-07-013 - BRACKET CHASSIS TOP STANDARD TYPE - EACH



HOUSING TUBE BRACKET KIT

Weld on housing tube bracketry to suit 3" axle tubes, 100% NEW

HQ-WB, LH-LX and LC-LJ bracketry kit

A9-07-017 - HOUSING TUBE BRACKETS - HQ-WB HOLDEN (PAIR)
A9-07-017BR - HOUSING BRACKET KIT BUSH UPPER RUBBER BUSH - HQ-WB HOLDEN (KIT)
A9-07-017BU - HOUSING BRACKET KIT BUSH UPPER URETHANE BUSH - HQ-WB HOLDEN (KIT)
A9-07-017C - HOUSING BRACKET KIT CLEAT UPPER - HQ-WB HOLDEN (KIT)
A9-07-018 - HOUSING TUBE BRACKETS - LH-LX HOLDEN (PAIR)
A9-07-018BR - HOUSING BRACKET KIT BUSH UPPER RUBBER BUSH - LH-LX HOLDEN (KIT)
A9-07-018BU - HOUSING BRACKET KIT BUSH UPPER URETHANE BUSH - LH-LX HOLDEN (KIT)
A9-07-018C - HOUSING BRACKET KIT CLEAT UPPER - LH-LX HOLDEN (KIT)
A9-07-019 - HOUSING TUBE BRACKETS - LC-LJ HOLDEN (PAIR)
A9-07-019BR - HOUSING BRACKET KIT BUSH UPPER RUBBER BUSH - LC-LJ HOLDEN (KIT)
A9-07-019BU - HOUSING BRACKET KIT BUSH UPPER URETHANE BUSH - LC-LJ HOLDEN (KIT)
A9-07-019C - HOUSING BRACKET KIT CLEAT UPPER - LC-LJ HOLDEN (KIT)



HOUSING TUBE CLEATS & BRACKETS

Weld on housing tube cleats and 4 link brackets to suit 3" axle tubes

A9-70-201 - PLATE LASER CUT TOP DIFF BRACKET 5MM (SUIT UPPER TRAILING ARMS) - EACH
A9-70-203 - PLATE LASER CUT LOWER DIFF BRACKET 5MM (SUIT LOWER TRAILING ARMS) - EACH
A9-70-204 - PLATE LASER CUT TOP DIFF BRACKET 10MM (SUIT UPPER TRAILING ARMS) - EACH
A9-70-210 - 4 LINK PLATE SUIT 3" TUBES (5mm MS PLATE) 1/2" HOLES - PLAIN TYPE - EACH
A9-70-211 - 4 LINK PLATE SUIT 3" TUBES (5mm MS PLATE) 1/2" HOLES - COIL OVER MOUNT TYPE - EACH
A9-70-220 - 4 LINK PLATE SUIT 3" TUBES (5mm MS PLATE) 9/16" HOLES - PLAIN TYPE - EACH
A9-70-221 - 4 LINK PLATE SUIT 3" TUBES (5mm MS PLATE) 9/16" HOLES - COIL OVER MOUNT TYPE - EACH



3RD MEMBER

3RD MEMBER TRUE TRAC TYPE

100% brand new Ford 9" complete replacement centre locker maximizes traction by delivering 100% of the torque to both drive wheels. Ideal for most street and performance applications. A helical gear differential is a mechanical unit that, unlike the Locker, offers smooth and progressive power transfer. If one tire begins to slip relative to the other tire, a separating force is created between the pinion gears and side gears. This generates internal friction which slows the spinning wheel and sends power to the wheel with the most traction. These differentials are comparable to the strength of a Locker, but without it's downsides and is ready to install.

A9-52-001 - FORD 9" DUTCHMAN RACE IRON CASE BIG SUPPORT 28 SPLINE TRUTRAC - EACH
A9-52-001A - FORD 9" DUTCHMAN RACE IRON CASE ALUM SUPPORT 28 SPLINE TRUTRAC - EACH
A9-52-002 - FORD 9" DUTCHMAN RACE IRON CASE BIG SUPPORT 31 SPLINE TRUTRAC - EACH
A9-52-002A - FORD 9" DUTCHMAN RACE IRON CASE ALUM SUPPORT 31 SPLINE TRUTRAC - EACH
A9-52-003 - FORD 9" DUTCHMAN RACE IRON CASE BIG SUPPORT 35 SPLINE TRUTRAC
A9-52-003A - FORD 9" DUTCHMAN RACE IRON CASE ALUM SUPPORT 35 SPLINE TRUTRAC
A9-52-101 - FORD 9" STRANGE RACE IRON CASE BIG SUPPORT 28 SPLINE TRUTRAC - EACH
A9-52-101A - FORD 9" STRANGE RACE IRON CASE BIG ALUM SUPPORT 28 SPLINE TRUTRAC - EACH
A9-52-102 - FORD 9" STRANGE RACE IRON CASE BIG SUPPORT 31 SPLINE TRUTRAC - EACH
A9-52-102A - FORD 9" STRANGE RACE IRON CASE BIG ALUM SUPPORT 31 SPLINE TRUTRAC - EACH
A9-52-103 - FORD 9" STRANGE RACE IRON CASE BIG SUPPORT 35 SPLINE TRUTRAC - EACH
A9-52-103A - FORD 9" STRANGE RACE IRON CASE BIG ALUM SUPPORT 35 SPLINE TRUTRAC - EACH
A9-52-201 - FORD 9" STRANGE HD ALUM THRU BOLT CASE & SUPPORT, 28 SPLINE TRUTRAC - EACH
A9-52-202 - FORD 9" STRANGE HD ALUM THRU BOLT CASE & SUPPORT, 31 SPLINE TRUTRAC - EACH
A9-52-203 - FORD 9" STRANGE HD ALUM THRU BOLT CASE & SUPPORT, 35 SPLINE TRUTRAC - EACH
A9-52-301 - FORD 9" STRANGE ALUM RACE, ALUM SUPPORT, 28 SPLINE TRUTRAC - EACH
A9-52-302 - FORD 9" STRANGE ALUM RACE, ALUM SUPPORT, 31 SPLINE TRUTRAC - EACH

3RD MEMBER LOCKER TYPE

100% brand new Ford 9" complete replacement centre locker maximizes traction by delivering 100% of the torque to both drive wheels. Ideal for most street and performance applications. It is engineered to keep both wheels in a constant drive mode, and has the ability to automatically allow wheel speed differentiation when required and is ready to install.

A9-53-001 - FORD 9" DUTCHMAN RACE IRON SUPPORT, 28 SPLINE LOCKER - EACH
A9-53-001A - FORD 9" DUTCHMAN RACE ALUM SUPPORT, 28 SPLINE LOCKER - EACH
A9-53-002 - FORD 9" DUTCHMAN RACE IRON SUPPORT, 31 SPLINE LOCKER - EACH
A9-53-002A - FORD 9" DUTCHMAN RACE ALUM SUPPORT, 31 SPLINE LOCKER - EACH
A9-53-101 - FORD 9" STRANGE RACE, BIG SUPPORT, 28 SPLINE LOCKER - EACH
A9-53-101A - FORD 9" STRANGE RACE, ALUM SUPPORT, 28 SPLINE LOCKER - EACH
A9-53-102 - FORD 9" STRANGE RACE, BIG SUPPORT, 31 SPLINE LOCKER - EACH
A9-53-102A - FORD 9" STRANGE RACE, ALUM SUPPORT, 31 SPLINE LOCKER - EACH
A9-53-103 - FORD 9" STRANGE RACE, BIG SUPPORT, 35 SPLINE LOCKER - EACH
A9-53-103A - FORD 9" STRANGE RACE, ALUM SUPPORT, 35 SPLINE LOCKER - EACH
A9-53-201 - FORD 9" STRANGE ALUM RACE, ALUM SUPPORT, 28 SPLINE LOCKER - EACH
A9-53-202 - FORD 9" STRANGE ALUM RACE, ALUM SUPPORT, 31 SPLINE LOCKER - EACH

3RD MEMBER WAVETRAC TYPE

100% brand new Ford 9" complete replacement centre fitted with a PATENTED WAVETRAC® DESIGN automatically improves grip in low traction conditions. this feature is truly innovative and unlike any other torque biasing diff design and is ready to install.

A9-56-101 - FORD 9" STRANGE RACE, BIG SUPPORT, 31 SPLINE WAVETRAC - EACH
A9-56-101A - FORD 9" STRANGE RACE, ALUM SUPPORT, 31 SPLINE WAVETRAC - EACH
A9-56-102 - FORD 9" STRANGE RACE, BIG SUPPORT, 35 SPLINE WAVETRAC - EACH
A9-56-102A - FORD 9" STRANGE RACE, ALUM SUPPORT, 35 SPLINE WAVETRAC - EACH

3RD MEMBER FULL SPOOL TYPE

100% brand new Ford 9" complete replacement centre using a full spool which maximises traction by delivering 100% of the torque to both wheels and is ready to install.

A9-55-001 - FORD 9" DUTCHMAN RACE IRON SUPPORT, 28 SPLINE FULL SPOOL - EACH
A9-55-001A - FORD 9" DUTCHMAN RACE ALUM SUPPORT, 28 SPLINE FULL SPOOL - EACH
A9-55-002 - FORD 9" DUTCHMAN RACE IRON SUPPORT, 31 SPLINE FULL SPOOL - EACH
A9-55-002A - FORD 9" DUTCHMAN RACE ALUM SUPPORT, 31 SPLINE FULL SPOOL - EACH
A9-55-101 - FORD 9" STRANGE RACE, BIG SUPPORT, 28 SPLINE SPOOL - EACH
A9-55-101A - FORD 9" STRANGE RACE, ALUM SUPPORT, 28 SPLINE SPOOL - EACH
A9-55-102 - FORD 9" STRANGE RACE, BIG SUPPORT, 31 SPLINE SPOOL - EACH
A9-55-102A - FORD 9" STRANGE RACE, ALUM SUPPORT, 31 SPLINE SPOOL - EACH
A9-55-103 - FORD 9" STRANGE RACE, BIG SUPPORT, 35 SPLINE SPOOL - EACH
A9-55-103A - FORD 9" STRANGE RACE, ALUM SUPPORT, 35 SPLINE SPOOL - EACH
A9-55-104 - FORD 9" STRANGE RACE, BIG SUPPORT, 40 SPLINE SPOOL - EACH
A9-55-104A - FORD 9" STRANGE RACE, ALUM SUPPORT, 40 SPLINE SPOOL - EACH
A9-55-201 - FORD 9" STRANGE HD ALUM THRU BOLT CASE & SUPPORT, 35 SPLINE FULL SPOOL - EACH
A9-55-202 - FORD 9" STRANGE HD ALUM THRU BOLT CASE & SUPPORT, 35 SPLINE FULL SPOOL SP PRO GEARS - EACH
A9-55-203 - FORD 9" STRANGE HD ALUM THRU BOLT CASE & SUPPORT, 40 SPLINE FULL SPOOL - EACH
A9-55-204 - FORD 9" STRANGE HD ALUM THRU BOLT CASE & SUPPORT, 40 SPLINE FULL SPOOL SP PRO GEARS - EACH
A9-55-301 - FORD 9" STRANGE ULTRA CASE 3.250" ALUM CASE & SUPPORT, 35 SPLINE FULL SPOOL - EACH
A9-55-302 - FORD 9" STRANGE ULTRA CASE 3.250" ALUM CASE & SUPPORT, 35 SPLINE FULL SPOOL SP PRO GEARS - EACH
A9-55-303 - FORD 9" STRANGE ULTRA CASE 3.250" ALUM CASE & SUPPORT, 40 SPLINE FULL SPOOL - EACH
A9-55-304 - FORD 9" STRANGE ULTRA CASE 3.250" ALUM CASE & SUPPORT, 40 SPLINE FULL SPOOL SP PRO GEARS - EACH
A9-55-401 - FORD 9" STRANGE ALUM RACE, ALUM SUPPORT, 28 SPLINE FULL SPOOL - EACH
A9-55-402 - FORD 9" STRANGE ALUM RACE, ALUM SUPPORT, 31 SPLINE FULL SPOOL - EACH

3RD MEMBER COMPONENTS

DUTCHMAN USA PINION SUPPORT

The Big Bearing Pinion Support fits Standard and Aftermarket Ford 9" Cases. Increases load carrying capabilities by providing more support. This bearing support has a 50% larger HD bearing which stabilizes the pinion head under extreme loads. It is designed for 350-HP-and-up applications. The Dutchman Big Bearing Support is constructed of extra-strong Nodular iron, and Computer Numerical Control precision machined.

[TM7 - DUTCHMAN USA NODULAR IRON BIG BEARING PINION SUPPORT - EACH](#)

[TM8 - DUTCHMAN USA ALUMINIUM BIG BEARING PINION SUPPORT - EACH](#)

9-PLUS STANDARD BEARING PINION SUPPORT

The 9-Plus Standard Pinion Support replaces the weaker, stock "Gray Iron" support with Nodular Iron for greater strength. The 9-Plus Standard Support is precision machined and fits into any 9"-style gear case. These supports are recommended for non-abusive applications up to 350 HP.

[CE4033N - STANDARD BEARING PINION SUPPORT - EACH](#)

9-PLUS BIG BEARING ALUMINIUM PINION SUPPORT

The Big Bearing Aluminium Pinion Support fits either "Race" or "Sportsman" Case. Increases load carrying capabilities by providing more support. This bearing support has a 50% larger HD bearing which stabilizes the pinion head under extreme loads. This pinion support has full oiling capabilities that allow it to be great for regular street driving as well as racing applications. Red anodized finish, part weighs 4 lbs. Fits any 9" Ford rear end.

[CE4048CWO - BIG BEARING ALUMINIUM PINION SUPPORT - EACH](#)

[CE4048CWOP - BIG BEARING ALUMINIUM PINION SUPPORT - POLISHED - EACH](#)

STRANGE DAYTONA IRON PINION SUPPORT

Nodular iron Pinion Support 9". Ford, 28-Spline

[STR-N1914 - STRANGE DAYTONA IRON PINION SUPPORT - EACH](#)

STRANGE DAYTONA ALUMINIUM PINION SUPPORT

Pinion Support, Ford 9" 28-Spline Pinion, Forged Aluminium, Black, Cups Installed, with O-Ring/Bolts

[STR-N1917 - STRANGE DAYTONA ALUMINIUM PINION SUPPORT - EACH](#)

STRANGE EXTREME ALUMINIUM PINION SUPPORT

Pinion Support, Ford 9" 35-Spline Pinion, Forged Aluminium, Cups Installed, with O-Ring/Bolts

[STR-N1922 - STRANGE EXTREME ALUMINIUM PINION SUPPORT - EACH](#)

YOKES

9-Plus offers a yoke for every 9 inch application. These are precision machined heavy duty parts that replace the stock yoke. They are designed with the OEM "look" with stamped steel dust slingers. The 94042 is 3.25 x 1.060" cross size and the 94043 is 3.625 x 1.125" cross size. They fit any 9" rear end with standard pinion support. The 94044, 94045, and 94046 are specifically designed and machined for the 9-Plus Big Bearing Pinion Support. Strange chrome moly 1350 billet steel 9" Ford yoke with 28 or 35 splines for use on large pinion shaft Pro Gears. Accepts a 3.625" x 1 3/16" diameter cap U-Bolt.

[3-4-3504-08 LONG - 1350 SERIES LONG YOKE - FOR STANDARD PINION SUPPORT - EACH](#)

[A9-15-002 - YOKE 9" 28 SPLINE \(3R\) UNI 92.07mm x 28.57mm - EACH](#)

[A9-15-003 - YOKE 9" 28 SPLINE FLANGE TYPE COMMODORE - EACH](#)

[A9-15-004 - YOKE 9" 28 SPLINE FLANGE TYPE FALCON - EACH](#)

[CE4042F - 1310 SERIES YOKE - FOR STANDARD PINION SUPPORT - EACH](#)

[CE4042M - 1330 SERIES YOKE - FOR STANDARD PINION SUPPORT - EACH](#)

[CE4044ND - 1350 SERIES YOKE - FOR BIG BEARING PINION SUPPORT - EACH](#)

[CE4042FD - 1310 SERIES YOKE - FOR BIG BEARING PINION SUPPORT - EACH](#)

[CE4042MD - 1330 SERIES YOKE - FOR BIG BEARING PINION SUPPORT - EACH](#)

[CE4044N - 1350 SERIES YOKE - FOR STANDARD PINION SUPPORT - EACH](#)

[CE4043L - 1330 SERIES LONG YOKE - FOR STANDARD PINION SUPPORT - EACH](#)

[CE4043LD - 1330 SERIES LONG YOKE - FOR BIG BEARING PINION SUPPORT - EACH](#)

[CE4042L - 1310 SERIES LONG YOKE - FOR STANDARD PINION SUPPORT - EACH](#)

[CE4042LD - 1310 SERIES LONG YOKE - FOR BIG BEARING PINION SUPPORT - EACH](#)

[CE4044ND - 1350 SERIES YOKE FORGED - FOR BIG BEARING PINION SUPPORT - EACH](#)

[DL14 - DUTCHMAN USA 1350 SERIES YOKE - FOR BIG BEARING PINION SUPPORT - EACH](#)

[STR-U1603 - STRANGE CHROME MOLY BILLET 1350 YOKE 28 SPLINE - EACH](#)

[STR-U1604 - STRANGE CHROME MOLY BILLET 1350 YOKE 35 SPLINE - EACH](#)

[STR-U2304 - STRANGE CHROME MOLY BILLET 1480 YOKE 35 SPLINE - EACH](#)

U-BOLTS (YOKE)

Heavy duty U-Bolt including lock nuts.

[A9-15-010 - U-BOLT \(1350\) 1" 3/16" \(30.01mm\) YOKE - PAIR](#)

[A9-15-011 - U-BOLT \(3R\) 1" 1/8" \(28.57mm\) YOKE - PAIR](#)

[A9-15-012 - U-BOLT \(1310, 1330\) 1" 1/16" \(26.98mm\) YOKE - PAIR](#)

[STR-U1610HD - STRANGE U-BOLT \(1350\) HEAVY DUTY - PAIR](#)

[STR-U1611 - STRANGE U-BOLT \(1480\) 1" 3/8" \(34.92MM\) YOKE - PAIR](#)

STRANGE PICK UP COLLAR

Magnetic Pick Up Collar, Pinion Yoke, 28 or 35 Spline, Ford, 9 in, 4 Magnet to suit STR-U1603 or STR-U1604

[STR-U1613-4 - STRANGE COMPUTER PICKUP COLLAR 4 MAGNET 28 SPLINE STRANGE YOKE - EACH](#)

[STR-U1614-4 - STRANGE COMPUTER PICKUP COLLAR 4 MAGNET 35 SPLINE STRANGE YOKE - EACH](#)

[STR-U1614-8 - STRANGE COMPUTER PICKUP COLLAR 8 MAGNET 35 SPLINE STRANGE YOKE - EACH](#)

STRANGE SENSOR BRACKET

Strange Computer Sensor Bracket to Suit Strange N1914 / N1917 / N1920 / N1921 / N1922 Support

[STR-N1927S - STRANGE COMPUTER SENSOR BRACKET \(SUIT STRANGE N1914 / N1917 / N1920 / N1921 / N1922 SUPPORT\) - EACH](#)

[STR-N2300S - STRANGE COMPUTER SENSOR BRACKET \(SUIT STRANGE HD PRO IRON SUPPORT\) - EACH](#)

SET UP KIT

3rd member bearing and set up kit includes carrier bearings and races, pinion bearings and races, pocket bearing and retainer, pinion seal, O-ring, solid spacer and shim kit, pinion nut, pinion depth shim kit, and gear set bolts

[SKM-2890-178B - SETUP KIT FORD 9" \(2.890" x 1.78" BIG PINION\) - KIT](#)

[SKM-3062-178B - SETUP KIT FORD 9" \(3.062" x 1.78" BIG PINION\) - KIT](#)

[SKM-2890-178S - SETUP KIT FORD 9" \(2.890" x 1.78" STANDARD PINION\) - KIT](#)

[SKM-3062-178S - SETUP KIT FORD 9" \(3.062" x 1.78" STANDARD PINION\) - KIT](#)

[SKM-3250-178B - SETUP KIT FORD 9" \(3.250" x 1.78" BIG PINION\) - KIT](#)

[SKM-3250-200B - SETUP KIT FORD 9" \(3.250" x 2.00" BIG PINION\) - KIT](#)

[STR-N1923 - STRANGE EXTREME ALUMINIUM PINION SUPPORT BEARING KIT 28 SPLINE - KIT](#)

[STR-N1924 - STRANGE EXTREME ALUMINIUM PINION SUPPORT BEARING KIT 35 SPLINE - KIT](#)



3RD MEMBER COMPONENTS

PINION SEAL

Pinion seal

472015 - FORD 9" BIG PINION - EACH
7044NA - FORD 9" SMALL PINION - EACH
P6370NOK - PINION SEAL BORG WARNER 75/78 SERIES - EACH
W15626262 - PINION SEAL HOLDEN BANJO W15626262 - EACH
W165262381 - PINION SEAL HOLDEN BORG WARNER W165262381 - EACH
W17628562 - PINION SEAL HOLDEN 10 BOLT SALISBURY - EACH
W20428339 - GEMINI PINION SEAL W 204 283 39 - EACH



PINION NUT

Original Equipment Manufacturer (OEM) 9" Pinion nuts. Nuts come with thread-locking compound in place.

CE4053 - PINION NUT 28 SPLINE - EACH
CE4053-35 - PINION NUT 35 SPLINE - EACH
GM-92140182 - PINION NUT - BORG WARNER 75/78 SERIES - EACH
STR-N1922B - PINION NUT STRANGE FORD 9" 35 SPLINE - EACH



RING GEAR BOLTS & WASHERS

Hardened bolts for installing Carriers to Ring Gears.

CE4075N - 9 PLUS RING GEAR BOLT (STANDARD, LOCKER & SPOOL) - QTY 10
CEH0035 - 9-PLUS RING GEAR BOLT WASHERS (TRACK LOCK) QTY 10
CE5013 - 9 PLUS RING GEAR BOLT & WASHER (TRACK LOCK) - QTY 10
ARP-250-3002 - RING GEAR BOLTS CHROME MOLY 7/16" x 0.940" LONG FORD 9" - QTY 10
ARP-250-3003 - RING GEAR BOLTS CHROME MOLY 7/16" x 0.750" LONG FORD 9" - QTY 10
A9-15-016 - BORG WARNER CROWN WHEEL BOLTS L/H THREAD GOOD USED - QTY 8
STR-N1975 - ARP 7/16"-20 x 1.062" RING GEAR BOLTS & WASHERS (STRANGE STEEL SPOOLS) - QTY 10
STR-N1976 - ARP 1/2"-20 x 1.062" RING GEAR BOLTS & WASHERS (STRANGE STEEL SPOOLS) - QTY 10



POCKET BEARING RETAINER

Pocket Bearing Retainer for Ford 9"

CE8020 - POCKET BEARING RETAINER - EACH



STRANGE LOAD BOLT

Load Bolt Assembly for strange ultra case and HD Pro Aluminium Case

STR-N1910H - STRANGE LOAD BOLT TO SUIT HD CASE - EACH



STRANGE ULTRA CASE PINION DEPTH SHIM

Pinion depth shim kit for Strange Ultra Case only

STR-N1950D - PINION DEPTH SHIM .003" (ULTRA CASE ONLY) - EACH
STR-N1950E - PINION DEPTH SHIM .007" (ULTRA CASE ONLY) - EACH
STR-N1950F - PINION DEPTH SHIM .008" (ULTRA CASE ONLY) - EACH
STR-N1950G - PINION DEPTH SHIM .010" (ULTRA CASE ONLY) - EACH



SOLID SPACER & SHIM KIT

Solid spacer and shim kit to replace the crush sleeve when you are rebuilding or building up a new 9" Ford 3rd member. More positive, more accurate and more reliable than a crush sleeve as well as being reusable.

Includes 1.625" O.D. x 1.325" I.D. x 0.445" thick spacer and 5 shims.

CE4039 - SOLID SPACER & SHIM KIT (SPACER & 5 SHIMS)
CE4039D - SOLID SPACER & SHIM KIT FOR BIG BEARING PINION SUPPORT (SPACER & 5 SHIMS)
STR-N1918 - STRANGE PINION YOKE SPACER KIT TO SUIT STR-U1603



PINION DEPTH SHIM KIT

Pinion depth shim kit for all 9" Ford 3rd. members that use a 5 bolt pinion support.

CE4040 - PINION DEPTH SHIM KIT - EACH



PINION SUPPORT O-RING

Pinion support sealing O-ring for all 9" pinion supports.

CE4061 - PINION SUPPORT O-RING - EACH



CRUSH SLEEVE

Collapsible pinion yoke crush sleeve

A9-15-013 - CRUSH SLEEVE STEEL FORD 9" - EACH
GM-92140181 - CRUSH SLEEVE - BORG WARNER 75/78 SERIES - EACH

PINION SUPPORT FASTENER KIT

3/8" UNC socket head cap screws and washers kit for installation of pinion supports

A9-15-014 - PINION SUPPORT FASTENER KIT
A9-15-014SS - PINION SUPPORT FASTENER KIT - S/S SOCKET HEAD CAP SCREWS (SUITS ALUM GEARCASES)



BEARINGS

3rd Member bearing

HM89410 - CONE TIMKEN #HM89410 - EACH
HM89443 - CUP TIMKEN #HM89443
HM89443/10 - BEARING TIMKEN #HM89443/10 ASSEMBLY - EACH
M5204TV - BEARING NTN #M5204TV (STRANGE HD CASE TAIL BEARING) - EACH
R1535-TAV - BEARING TIMKEN #R1535-TAV - EACH
SET 18 - BEARING TIMKEN #SET 18 - EACH
SET 37 - BEARING TIMKEN #SET 37 - EACH
SET 38 - BEARING TIMKEN #SET 38 - EACH
SET 45 - BEARING TIMKEN #SET 45 - EACH
SET 47 - BEARING TIMKEN #SET 47 - EACH
SET 63 - BEARING TIMKEN #SET 63 - EACH
SET 67 - PINION BEARING GEMINI TIMKEN SET 67 - EACH
SET 69 - BEARING TIMKEN #SET 69 - EACH
SET 70 - BEARING TIMKEN #SET 70 - EACH
SET 100 - BEARING TIMKEN #SET 100 - EACH
SET 268 - CARRIER BEARING GEMINI TIMKEN SET 268 - EACH
SET 307 - BEARING TIMKEN SET 307 - EACH
SET 309 - PINION BEARING GEMINI TIMKEN SET 309 - EACH
SET 328 - PINION BEARING TIMKEN SET 328 - EACH



ADAPTER BEARING

This bearing race is used to adapt the carrier bearing 3.250" O.D to 1.780" I.D Carrier bearing. This allows 3.250" Ford 9" cases to run 28, 31, Spline Hemispheres.

CE8019A - ADAPTER-CONVERTS 3.250" CARRIER BEARING JOURNAL TO 2.891" - EACH



3RD MEMBER COMPONENTS

SPEEDI SLEEVE

This thin-walled sleeve [0,28 mm (0.011 in.)], is simply pushed in position over the worn area, providing a counterface surface that is optimized for radial shaft seals.

- NP99157 - SPEEDI SLEEVE #NP99157 (BANJO YOKE) - EACH
- NP99165 - SPEEDI SLEEVE #NP99165 (BORG WARNER YOKE) - EACH
- NP99176 - SPEEDI SLEEVE #NP99176 (10 BOLT SALISBURY YOKE) - EACH
- NP99181 - SPEEDI SLEEVE #NP99181 (9" YOKE) - EACH



FULL SPOOLS

Heavy duty chrome-molly precision machined full spools

- A9-14-010 - FULL SPOOL BORG WARNER 28 SPLINE - EACH
- A9-14-011 - FULL SPOOL BORG WARNER 31 SPLINE - EACH
- STR-D1515 - STRANGE FORD 9" S-SERIES STEEL SPOOL 28 SPLINE - EACH
- STR-D1516 - STRANGE FORD 9" S-SERIES STEEL SPOOL 31 SPLINE - EACH
- STR-D1553 - STRANGE FORD 9" L/W PRO RACE SPOOL 31 SPLINE - EACH
- STR-D1554 - STRANGE FORD 9" L/W PRO RACE SPOOL 33 SPLINE - EACH
- STR-D1555 - STRANGE FORD 9" L/W PRO RACE SPOOL 35 SPLINE - EACH
- STR-D2000 - STRANGE FORD 9" L/W PRO RACE SPOOL 40 SPLINE - EACH
- STR-D2002 - STRANGE FORD 9" L/W PRO RACE SPOOL 40 SP (SUIT 3.812" CASE) - EACH



EATON DETROIT LOCKER

The Detroit Locker is the most durable and dependable locking differential available. The Detroit Locker maximizes traction By delivering 100% of the torque to both drive wheels. It is engineered to keep both wheels in a constant drive mode, and has the ability to automatically allow wheel speed differentiation when required. No other performance differential has the reputation for delivering traction in mud, snow, rocks and on the track. The choice of professional racers and off-road enthusiasts around the world! The durability of the Detroit Locker is unmatched!

- EAT-187SL13A - 28 SPLINE DETROIT LOCKER FORD 9" - EACH
- EAT-187S17B - 31 SPLINE DETROIT LOCKER FORD 9" - EACH
- EAT-187S160A - 35 SPLINE DETROIT LOCKER FORD 9" - EACH



WAVETRAC

The Wavetrac® limited slip are designed to give you two wheel drive without clunky or noisy locking mechanisms.

The Wavetrac®'s internal gears are made from 9310. Machined from billet steel and built to last.

The Wavetrac® is a helical-gear limited-slip differential, but unlike other gear differentials, the Wavetrac® was designed from a clean sheet using state-of-the-art knowledge and engineering to be a better differential than any other.

The Wavetrac® Differential will give you quicker acceleration and faster cornering by driving both drive wheels instead of just one. Improved no-load performance when compared to other helical gear differentials on the market.

- 56.309.175WK - 31 SPLINE WAVETRAC FORD 9" - EACH
- 56.309.178WK - 35 SPLINE WAVETRAC FORD 9" - EACH



EATON TRUE TRAC

Eaton TrueTrac worm gear style posi traction unit

- EAT-912A587 - 28 SPLINE TRUE TRAC FORD 9" - EACH
- EAT-913A586 - 31 SPLINE TRUE TRAC FORD 9" - EACH
- EAT-914A690 - 35 SPLINE TRUE TRAC FORD 9" - EACH
- 99-TTRC10368 - 28 SPLINE EATON TRU TRAC - 10 BOLT SALISBURY (Holden HQ-VK) - EACH
- 99-TTRC10368-31SPL - 31 SPLINE EATON TRU TRAC - 10 BOLT SALISBURY (Holden HQ-VK) - EACH
- 99-TTRC11090 - 10 SPLINE EATON TRU TRAC - 6 CYLINDER BANJO (Holden) - EACH
- 99-TTRC11400 - 28 SPLINE EATON TRU TRAC - 6 CYLINDER BANJO (Holden) - EACH
- 99-TTRC11401 - 25 SPLINE EATON TRU TRAC - 6 CYLINDER BANJO (Holden) - EACH
- 99-TTRC11598 - 23 SPLINE EATON TRU TRAC - 6 CYLINDER BANJO (Holden) - EACH
- 99-TTRC11601 - 26 SPLINE EATON TRU TRAC - 6 CYLINDER BANJO (Holden) - EACH
- 99-TTRC9837-00 - 28 SPLINE EATON TRU TRAC - COMMODORE >3.70 RATIO (VL-VT1) - EACH
- 99-TTRC9837-00-31SPL - 31 SPLINE EATON TRU TRAC - COMMODORE (VL-VS) - EACH



MOTIVE FORD 9" PERFORMANCE GEAR SETS

Motive Gears are one of the leaders in driveline technology.

Heat treated 8620 material is used for the Pro Street/ Standard gear sets.

Pinion diameter is 1.313" with 28 splines and ring gear installs with 10-7/16" x 20 RH bolts.

- | | |
|-----------------------------------|-----------------------------------|
| F890300 - FORD 10BLT 9.0 R/P 3.00 | F890514 - FORD 10BLT 9.0 R/P 5.14 |
| F890325 - FORD 10BLT 9.0 R/P 3.25 | F890529 - FORD 10BLT 9.0 R/P 5.29 |
| F890350 - FORD 10BLT 9.0 R/P 3.50 | F890543 - FORD 10BLT 9.0 R/P 5.43 |
| F890370 - FORD 10BLT 9.0 R/P 3.70 | F890567 - FORD 10BLT 9.0 R/P 5.67 |
| F890389 - FORD 10BLT 9.0 R/P 3.89 | F890583 - FORD 10BLT 9.0 R/P 5.83 |
| F890411 - FORD 10BLT 9.0 R/P 4.11 | F890600 - FORD 10BLT 9.0 R/P 6.00 |
| F890457 - FORD 10BLT 9.0 R/P 4.57 | F890620 - FORD 10BLT 9.0 R/P 6.20 |
| F890471 - FORD 10BLT 9.0 R/P 4.71 | F890633 - FORD 10BLT 9.0 R/P 6.33 |
| F890486 - FORD 10BLT 9.0 R/P 4.86 | F890650 - FORD 10BLT 9.0 R/P 6.50 |



MOTIVE FORD 9" PERFORMANCE GEAR SETS - POLISHED

Motive Gears are one of the leaders in driveline technology.

Heat treated 8620 material is used for the Pro Street/ Standard gear sets

Pinion diameter is 1.313" with 28 splines and ring gear installs with 10-7/16" x 20 RH bolts

Isotopic polished - reduces friction, operating temperatures and gear wear.

- F890300P - MOTIVE PERFORMANCE GEAR SET FORD 9" 3.00 RATIO (ISOTOPIC POLISHED) - EACH
- F890325P - MOTIVE PERFORMANCE GEAR SET FORD 9" 3.25 RATIO (ISOTOPIC POLISHED) - EACH
- F890350P - MOTIVE PERFORMANCE GEAR SET FORD 9" 3.50 RATIO (ISOTOPIC POLISHED) - EACH
- F890370P - MOTIVE PERFORMANCE GEAR SET FORD 9" 3.70 RATIO (ISOTOPIC POLISHED) - EACH
- F890389P - MOTIVE PERFORMANCE GEAR SET FORD 9" 3.89 RATIO (ISOTOPIC POLISHED) - EACH
- F890411P - MOTIVE PERFORMANCE GEAR SET FORD 9" 4.11 RATIO (ISOTOPIC POLISHED) - EACH



STRANGE US GEAR - PERFORMANCE GEAR SETS

Strange US Gears are one of the leaders in driveline technology.

Heat treated 8620 material is used for the Pro Street/ Standard gear sets.

Pinion diameter is 1.313" with 28 splines and ring gear installs with 10-7/16" x 20 RH bolts.

- 07890300 - US GEAR SET FORD 9" 3.00 RATIO - EACH
- 07890325 - US GEAR SET FORD 9" 3.25 RATIO - EACH
- 07890350 - US GEAR SET FORD 9" 3.50 RATIO - EACH
- 07890370 - US GEAR SET FORD 9" 3.70 RATIO - EACH
- 07890389 - US GEAR SET FORD 9" 3.89 RATIO - EACH
- 07890411 - US GEAR SET FORD 9" 4.11 RATIO - EACH
- 07890430 - US GEAR SET FORD 9" 4.30 RATIO - EACH
- 07890457 - US GEAR SET FORD 9" 4.57 RATIO - EACH



3RD MEMBER COMPONENTS

GEAR MARKING COMPOUND

Kits contain gear marking compound, application brush, Loctite compound and gasket maker available as an option.

555-612200 - GEAR MARKING COMPOUND WITH BRUSH - EACH

836-35-0007-01 - GEAR MARKING COMPOUND WITH BRUSH, GASKET MAKER, LOCTITE - EACH



STRANGE NODULAR IRON CASE

Chrome-moly bearing caps retain by socket head cap screws that exceed aircraft grade 8 specifications.

Steel adjuster nuts. The pinion pilot bearing has been reinforced with superior D-4512 nodular and additional material. Bearing bores and reinforcing ribs are all cast with additional D-4512 material in critical areas - ribs were also carefully designed to further enhance rigidity. Machined by the same company which SVO Ford selected to manufacture all its 9" cases - Strange Engineering. Strange nodular cases are virtually indestructible therefore, the iron case is recommended for any vehicle which accepts a 9" housing and a 9" gear set.

STR-N1905 - STRANGE FORD 9" NODULAR IRON CASE - 3.062" - EACH

STR-N1906 - STRANGE FORD 9" NODULAR IRON CASE - 3.250" - EACH



STRANGE ALUMINIUM GEAR CASE

For applications where weight is crucial and gear set life is not an issue, Strange offers the lightweight high tensile aluminium alloy Ford 9" case. This case, with forged 2014T-6 aluminium bearing caps, is a full 20 lbs. lighter than the Strange nodular iron unit yet it has a greater tensile strength than a standard 9" Ford case.

STR-N1901 - STRANGE FORD 9" ALUMINIUM CASE - 3.062" - EACH

STR-N1904 - STRANGE FORD 9" ALUMINIUM CASE - 3.250" - EACH



STRANGE ULTRA CASE

Heavy duty aluminium 9" Ultra Case is engineered to provide better lubrication to the pinion bearings and easily accept 9.00" or stronger 9.50" gear sets. It is strong enough to endure Pro-Mod, Alcohol & heavy door car applications. Extra long pinion support and substantially larger pinion bearings for improved pinion shaft support and increased ring and pinion life. Made with Chrome molly encapsulated studs, extra wide tail bearing, tail bearing retainer plate, wide billet caps and fully machined adjuster nuts.

STR-P3250ST - STRANGE FORD 9" ULTRA CASE 3.250" SMALL STEM - EACH

STR-P3250LT - STRANGE FORD 9" ULTRA CASE 3.250" LARGE STEM - EACH

STR-P3812ST - STRANGE FORD 9" ULTRA CASE 3.812" SMALL STEM - EACH

STR-P3812LT - STRANGE FORD 9" ULTRA CASE 3.812" LARGE STEM - EACH



STRANGE FORD 9" ALUMINIUM THRU BOLT

HD Alum Pro 3.250" Case kit- case, support, shims, tail bearing & retainer

STR-P3200 - STRANGE FORD 9" ALUMINIUM THRU BOLT CASE - 3.062" - EACH

STR-P3203 - STRANGE FORD 9" ALUMINIUM THRU BOLT CASE - 3.250" - EACH

DUTCHMAN NODULAR IRON CASE

The DMI stock replacement nodular iron 9" Ford street series case is the answer for street cruiser and mild performance vehicles. This newly designed nodular iron 3rd member case provides an unsurpassed combination of strength and value.

The street series case is available in two bearing sizes; the 3.062" size suitable for all 28 & 31 spline differential combinations as well as the 3.250" size for 35-spline True Track, Detroit locker, and full spool applications. Good for cruisers to medium performance track use. Good for up to 600hp in 31 spline, or up to 800hp in 35 spline.

TM52 - DUTCHMAN USA NODULAR IRON RACE CASE 3.062" - EACH

TM53 - DUTCHMAN USA NODULAR IRON RACE CASE 3.250" - EACH



FLOATER KITS

STEEL 1500 SERIES FLOATER KITS

Engineer / DOT approved for road use.

These kits comprise of the following items:

- Billet Steel hubs with stud patterns 5 x 4.5", 4.75", 5.0", 5.5" & 120mm PCD (Black oxide finish)
- High strength steel weld in spindles
- High strength chrome molly drive plates (28,30,31 & 35 spline)
- High strength chrome molly wheel studs (1/2", M14 or 5/8")
- Billet 6061 alloy end caps
- Timken Bearings & National Seals
- Lock nuts (L/H & R/H thread)
- Lock washers
- O-rings
- All fasteners supplied for kit



1500-28-STD - FLOATER KIT 1500 SERIES (STANDARD) - 28 SPLINE KIT (5x4.5"/4.75")
1500-31-STD - FLOATER KIT 1500 SERIES (STANDARD) - 31 SPLINE KIT (5x4.5"/4.75")
1500-28-UPGRADED - FLOATER KIT 1500 SERIES (UPGRADED) - 28 SPLINE KIT (5x4.5"/4.75"/120mm)
1500-30-UPGRADED - FLOATER KIT 1500 SERIES (UPGRADED) - 30 SPLINE KIT (5x4.5"/4.75"/120mm)
1500-31-UPGRADED - FLOATER KIT 1500 SERIES (UPGRADED) - 31 SPLINE KIT (5x4.5"/4.75"/120mm)
1500-35-UPGRADED - FLOATER KIT 1500 SERIES (UPGRADED) - 35 SPLINE KIT (5x4.5"/4.75"/120mm)
1500-28B-UPGRADED - FLOATER KIT 1500 SERIES (UPGRADED) - 28 SPLINE KIT (5x5.0"/5.5")
1500-31B-UPGRADED - FLOATER KIT 1500 SERIES (UPGRADED) - 31 SPLINE KIT (5x5.0"/5.5")
1500-35B-UPGRADED - FLOATER KIT 1500 SERIES (UPGRADED) - 35 SPLINE KIT (5x5.0"/5.5")

ALLOY 2500 SERIES FLOATER KITS

These kits comprise of the following items:

- Billet 7075 alloy hubs with stud patterns 5 x 4.5", 4.75", 5.0" & 5.5"
- High strength chrome molly weld in flanged spindles
- High strength chrome molly drive plates (35 & 40 spline)
- High strength chrome molly wheel studs (5/8")
- Billet 6061 alloy end caps
- Timken Bearings & National Seals
- Lock nuts (L/H & R/H thread)
- Chrome molly locking rings
- O-rings
- All fasteners supplied for kit.



2500-35-STREET - FLOATER KIT 2500 SERIES (STREET) - 35 SPLINE KIT (5x4.5"/4.75") 5/8" STUDS
2500-40-STREET - FLOATER KIT 2500 SERIES (STREET) - 40 SPLINE KIT (5x4.5"/4.75") 5/8" STUDS
2500-35B-STREET - FLOATER KIT 2500 SERIES (STREET) - 35 SPLINE KIT (5x5.0"/5.5") 5/8" STUDS
2500-40B-STREET - FLOATER KIT 2500 SERIES (STREET) - 40 SPLINE KIT (5x5.0"/5.5") 5/8" STUDS
2500-35-DRAG - FLOATER KIT 2500 SERIES (DRAG) - 35 SPLINE KIT (5x4.5"/4.75") 5/8" STUDS, ROTOR, CALIPER MOUNT
2500-40-DRAG - FLOATER KIT 2500 SERIES (DRAG) - 40 SPLINE KIT (5x4.5"/4.75") 5/8" STUDS, ROTOR, CALIPER MOUNT
2500-35B-DRAG - FLOATER KIT 2500 SERIES (DRAG) - 35 SPLINE KIT (5x5.0"/5.5") 5/8" STUDS, ROTOR, CALIPER MOUNT
2500-40B-DRAG - FLOATER KIT 2500 SERIES (DRAG) - 40 SPLINE KIT (5x5.0"/5.5") 5/8" STUDS, ROTOR, CALIPER MOUNT

STRANGE PRO TOURING FLOATER KITS (Axles & Brake Kit sold separately)

The street floater kit is highlighted by the forged Chrome-Moly spindles, Chrome-Moly hubs and 31 or 35 spline drive plates for the ultimate in strength and safety. When paired with the proprietary Wilwood brakes, this system eliminates piston knock-back and keeps performance and feel of the brakes consistent, every time. 4 1/2", 4 3/4" and 5" patterns are available. Spindles will work with 3" & 3 1/4" diameter tubes.

These kits comprise of the following items:

- 1/2"-20 or 5/8"-18 press in studs
- 4 1/2", 4 3/4", & 5" bolt pattern hubs
- Bearings, spacers and hardware for installation included



STR-F5010-1/2 - STRANGE PRO TOURING FLOATER KIT 35 SPLINE 1/2" STUDS
STR-F5010-5/8 - STRANGE PRO TOURING FLOATER KIT 35 SPLINE 5/8" STUDS
STR-F5011-1/2 - STRANGE PRO TOURING FLOATER KIT 31 SPLINE 1/2" STUDS
STR-F5011-5/8 - STRANGE PRO TOURING FLOATER KIT 31 SPLINE 5/8" STUDS

FLOATER COMPONENTS

WHEEL STUDS

Wheel stud to suit 1500/2500 or Strange Floater Kits only

RPWS001 - FLOATER WHEEL STUD 1/2" UNF x 67mm STUD (SUIT 1500 SERIES KIT) - EACH
RPWS002 - FLOATER WHEEL STUD 1/2" UNF x 85mm STUD (SUIT 1500 SERIES KIT) - EACH
RPWS007 - FLOATER WHEEL STUD 7/16" UNF x 61mm STUD (SUIT 1500 SERIES KIT) - EACH
RPWS008 - FLOATER WHEEL STUD 1/2" UNF x 50mm STUD (SUIT 1500 SERIES KIT) - EACH
RPWS009 - FLOATER WHEEL STUD M12 x 1.5 x 50mm STUD (SUIT 1500 SERIES KIT) - EACH
RPWS013 - FLOATER WHEEL STUD 1/2" UNF x 53mm STUD (SUIT 1500 SERIES KIT) - EACH
RPWS016 - FLOATER WHEEL STUD M14 x 1.5 x 85mm STUD (SUIT 1500 SERIES KIT) - EACH
RPWS019 - FLOATER WHEEL STUD 5/8" UNF x 61mm STUD (SUIT 2500 SERIES KIT) - EACH
RPWS020 - FLOATER WHEEL STUD 5/8" UNF x 71mm STUD (SUIT 2500 SERIES KIT) - EACH
RPWS021 - FLOATER WHEEL STUD 5/8" UNF x 80mm STUD (SUIT 2500 SERIES KIT) - EACH
RPWS025 - FLOATER WHEEL STUD M12 x 1.5 x 67mm STUD (SUIT 1500 SERIES KIT) - EACH
RPWS032 - FLOATER WHEEL STUD 1/2" UNF x 36mm STUD (SUIT 1500 SERIES KIT) - EACH
RPWS033 - FLOATER WHEEL STUD 5/8" UNF x 64mm STUD (SUIT 1500 SERIES KIT) - EACH
RPWS034 - FLOATER WHEEL STUD 5/8" UNF x 84mm STUD (SUIT 1500 SERIES KIT) - EACH
RPWS036 - FLOATER WHEEL STUD M12 x 1.25 x 67mm STUD (SUIT 1500 SERIES KIT) - EACH
RPWS037 - FLOATER WHEEL STUD M14 x 1.5 x 67mm STUD (SUIT 1500 SERIES KIT) - EACH
RPWS041 - FLOATER WHEEL STUD 5/8" UNF x 49mm STUD (SUIT 2500 SERIES KIT) - EACH
RPWS043 - FLOATER WHEEL STUD 1/2" UNF x 62mm STUD (SUIT 1500 SERIES KIT) - EACH
STR-A3164A - STRANGE WHEEL STUD KIT 1/2" x 3.115" PRESS IN STUDS TO SUIT STR-F5010 FLOATER KIT
STR-A3166A - STRANGE WHEEL STUD KIT 5/8" x 3.115" PRESS IN STUDS TO SUIT STR-F5010 FLOATER KIT



BRAKE KITS

FORD FALCON EA-EB REAR DISC BRAKE KIT

Rear disc brake bolt on kit comprising of the following: PBR alloy single piston calipers with integrated park brake, disc pads, bolt on aluminium caliper mounts, sheet metal rotor cover & all fasteners.

- BKF-001 - FORD FALCON EA-EB REAR BRAKE KIT (NO ROTORS) - KIT**
- BKF-001A - FORD FALCON EA-EB REAR BRAKE ROTOR (PLAIN ROTORS) - EACH**
- BKF-001B - FORD FALCON EA-EB REAR BRAKE ROTOR (SLOTTED ROTORS) - EACH**
- BKF-001C - FORD FALCON EA-EB REAR ROTOR (SLOTTED/DRILLED ROTORS) - EACH**

HOLDEN COMMODORE VN-VS REAR DISC BRAKE KIT

Rear disc brake bolt on kit comprising of the following: PBR alloy single piston calipers, disc pads, internal handbrake shoes mounted on zinc plated backing plates fully assembled, sheet metal rotor cover & all fasteners.

- BKH-001- HOLDEN COMMODORE VN-VS REAR BRAKE KIT (NO ROTORS) - KIT**
- BKH-001A - HOLDEN COMMODORE VN-VS REAR BRAKE ROTOR (PLAIN ROTORS) - EACH**
- BKH-001B - HOLDEN COMMODORE VN-VS REAR BRAKE ROTOR (SLOTTED ROTORS) - EACH**
- BKH-001C - HOLDEN COMMODORE VN-VS REAR BRAKE ROTOR (DRILLED/SLOTTED ROTORS) - EACH**

FORD REAR DRUM BRAKE KIT

Strange 11" x 2.5" Drum brake kits.

It suits Big Ford New Style housing ends, 2.78" register, 2.50" Brake gap can be installed without housing or axles modification. Drilled 5 x 4.5" & 4.75".

- STR-B1606 - STRANGE DRUM BRAKE KIT 11" (2.50" BRAKE SPACE) TORINO ENDS (WITH DRUMS) - PAIR**

HOLDEN REAR DRUM BRAKE KIT

A9 offers a 10" x 2" Drum brake kits that use standard OEM Holden parts.

If your housing and axles are set up for this standard, (65mm Holden Housing ends, 71.3mm register, 58mm brake space) can be installed without housing or axles modification. This is a standard rebuilt brake kit for HQ - WB rear drum brake OEM Differs

- BKH-200 - HOLDEN HQ - WB REAR 10" DRUM BRAKE KIT (WITH DRUMS) - KIT**

WILWOOD REAR DISC BRAKE KIT

Wilwood rear disc brake kits complete.

- 140-7140-D - WILWOOD FORGED BLACK DYNALITE REAR PARKING BRAKE KIT BIG FORD NEW STYLE (2.50" OFFSET)**
- 140-11389-D - DYNAPRO BLACK LOW-PROFILE 11.00" REAR PARKING BRAKE KIT DRILLED BIG FOR NEW STYLE - (2.50" OFFSET)**
- 140-11403-D - DYNAPRO BLACK LOW-PROFILE 11.00" REAR PARKING BRAKE KIT DRILLED SMALL FORD - (2.50" OFFSET)**
- 140-12420 - FORGED BILLET DYNALITE BLACK REAR PARKING BRAKE KIT STRANGE FLOATER - (3.49")**
- 140-12420-D - FORGED BILLET DYNALITE BLACK REAR PARKING BRAKE KIT DRILLED STRANGE FLOATER - (3.49")**
- 140-12420-DB - FORGED BILLET DYNALITE BLACK DUST-BOOT REAR PARKING BRAKE KIT STRANGE FLOATER - (3.49")**
- 140-12420-DOB - FORGED BILLET DYNALITE BLACK DUST-BOOT REAR PARKING BRAKE KIT DRILLED STRANGE FLOATER - (3.49")**
- 140-13203-D - DYNAPRO BLACK DUST-BOOT FRONT 12.19" VENTED ROTOR CAMARO 67-69 - KIT**
- 140-13206 - DYNAPRO BLACK DUST-BOOT REAR PARKING BRAKE KIT SMALL FORD - (2.50" OFFSET)**
- 140-13206-D - DYNAPRO BLACK DUST-BOOT REAR PARKING BRAKE KIT DRILLED SMALL FORD - (2.50" OFFSET)**
- 140-13207 - DYNAPRO BLACK DUST-BOOT REAR PARKING BRAKE KIT BIG FORD NEW STYLE - (2.50" OFFSET)**
- 140-13207-D - DYNAPRO BLACK DUST-BOOT REAR PARKING BRAKE KIT DRILLED BIG FORD NEW STYLE - (2.50" OFFSET)**
- 140-13207-DR - DYNAPRO RED DUST-BOOT REAR 12.19" PARKING BRAKE KIT DRILLED BIG FORD NEW STYLE - (2.50")**
- 140-13952-D - FORGED BILLET DYNALITE BLACK REAR 11.00" PARKING BRAKE KIT DRILLED STRANGE FLOATER - (3.49")**
- 140-15602-D - DYNAPRO BLACK DUST-BOOT REAR 11.00" PARKING BRAKE KIT DRILLED BIG FORD NEW STYLE - (2.50")**

WILWOOD FRONT DISC BRAKE KIT

Wilwood front disc brake kits complete.

- 140-13203-D - DYNAPRO BLACK DUST-BOOT FRONT 12.19" VENTED ROTOR CAMARO 67-69 - KIT**



BRAKE COMPONENTS

WILWOOD ROTOR ADAPTOR

Wilwood hat/rotor register adapter rings have a universal fit to adapt Wilwood hats and rotors on axles with center register diameters smaller than 3.06".

300-11337 - WILWOOD ADAPTER ROTOR/HAT REGISTER RING 2.80" - EACH

WILWOOD CALIPER

The Forged Billet Dynalite has wide spread application over many forms over motorsports. It serves as the base model in the majority of Wilwood's Bolt-On Disc Brake Kits. The latest applied developments and innovations in caliper design and manufacturing processes have resulted in substantial improvements in strength and performance over all comparable models.

120-6798-P - WILWOOD CALIPER 4 x 1.62" PISTON 0.38" ROTOR POLISHED - EACH

120-6818 - WILWOOD CALIPER 4 x 1.75" PISTON 0.38" ROTOR BLACK - EACH

WILWOOD BRAKE PADS

- For most dirt track applications including super late models, modifieds, and rear inboard sprints using vented iron rotors.
- Light to medium duty road racing and track day events.
- Drag racing with iron or steel rotors. •Performance street category competition.

BC-150WIL - WILWOOD 12.19" ROTOR TO HQ HOLDEN STUD AXLE - FRONT CALIPER MOUNT BRACKET - PAIR

BC-160WIL - WILWOOD 12.19" ROTOR TO LH/LX TORANA STUD AXLE - FRONT CALIPER MOUNT BRACKET - PAIR

STEEL BRAKE LINE

Steel brake line 3/16" OD

CE6022-30 - BRAKE LINE 3/16" x 30" LONG - ZINC PLATED - EACH

CE6022-40 - BRAKE LINE 3/16" x 40" LONG - ZINC PLATED - EACH

CE6022-60 - BRAKE LINE 3/16" x 60" LONG - ZINC PLATED - EACH

HANDBRAKE BRAKE CABLE KIT

New handbrake cable kits to suit 9" diff conversions

RBC008 - HANDBRAKE CABLE HD - HR TO COMMODORE DISC - EACH

RBC018 - HANDBRAKE CABLE EJ-EH TO COMMODORE DISC - EACH

RBC020PR - HANDBRAKE CABLE HQ-WB UTE/VAN TO COMMODORE DISC - KIT

RBC021PR - HANDBRAKE CABLE HQ-HZ SEDAN/COUPE TO COMMODORE DISC - KIT

RBC022PR - HANDBRAKE CABLE LH-LX TO COMMODORE DISC - KIT

RBC023PR - HANDBRAKE CABLE HG-HT TO COMMODORE REAR DISC - KIT

RBC029PR - HANDBRAKE CABLE LC-LJ TO COMMODORE DISC - KIT

RBC031PR - HANDBRAKE CABLE UC TORANA TO COMMODORE DISC (PAIR)

RBC033PR - HANDBRAKE CABLE HQ-WB SEDAN/COUPE TO WILWOOD DISC (PAIR)

RBC034PR - HANDBRAKE CABLE HQ-WB UTE/VAN TO WILWOOD DISC - KIT

RBC035PR - HANDBRAKE CABLE LH-LX TO WILWOOD DISC - KIT

RBC036PR - HANDBRAKE CABLE HG-HT SEDAN/COUPE TO WILWOOD DISC - KIT

RBC037PR - HANDBRAKE CABLE CHEV CAMARO 1968 TO WILWOOD DISC (PAIR)

RBC038PR - HANDBRAKE CABLE LC-LJ TO WILWOOD DISC (PAIR)

RBC041 - HANDBRAKE CABLE XY FALCON TO EA/EB DISC - EACH

RBC049 - HANDBRAKE CABLE XY FALCON TO WILWOOD DISC - EACH

FORD REAR DISC BRAKE ROTORS

New DBA rotors

DBA103 - DISC ROTOR PLAIN -REAR (FORD 73-79 XB/XC 9" DIFF) - EACH

DBA103S - DISC ROTOR SLOTTED -REAR (FORD 73-79 XB/XC 9" DIFF) - EACH

HOLDEN COMMODORE VN - VS REAR DISC BRAKE ROTOR

Holden Commodore VN - VS rear disc brake

DBA016U - DISC ROTOR PLAIN - REAR (HOLDEN COMMODORE VB-VS) UNDRILLED - EACH

HOLDEN COMMODORE VT-VZ REAR DISC BRAKE BOLT ON CALIPER MOUNTING KIT

Bolt on rear caliper mount bracket kit to suit Altra 9 Bearings end #A9-02-014. This will allow standard factory Type VT-VZ IRS brakes to mount up. Brackets are zinc plated and include handbrake cable mounts.

Kit is supplied with 0 Deg (Horizontal caliper mount brackets)

BC-100 - HOLDEN COMMODORE VT-VZ BRAKE MOUNTING KIT TO SUIT A9-02-010 BEARING END

BC-101 - HOLDEN COMMODORE VT-VZ BRAKE MOUNTING KIT TO SUIT A9-02-014 BEARING END

HOLDEN COMMODORE VT-VZ REAR DISC BRAKE BOLT ON CALIPER MOUNT BRACKETS

Bolt on rear caliper mount bracket to suit Altra 9 Bearings end #A9-02-010. This will allow standard factory Type VT-VZ IRS brakes to mount up. Brackets are zinc plated and include handbrake cable mounts.

BC-130DS - MOUNTING KIT BCH-100 CALIPER BRACKET DRIVERS SIDE -30 DEG - EACH

BC-130PS - MOUNTING KIT BCH-100 CALIPER BRACKET PASSENGERS SIDE -30 DEG - EACH

BC-131DS - MOUNTING KIT BCH-100 CALIPER BRACKET DRIVERS SIDE 0 DEG - EACH

BC-131PS - MOUNTING KIT BCH-100 CALIPER BRACKET PASSENGERS SIDE 0 DEG - EACH

BC-132DS - MOUNTING KIT BCH-100 CALIPER BRACKET DRIVERS SIDE +15 DEG - EACH

BC-132PS - MOUNTING KIT BCH-100 CALIPER BRACKET PASSENGERS SIDE +15 DEG - EACH

BC-133DS - MOUNTING KIT BCH-100 CALIPER BRACKET DRIVERS SIDE +30 DEG - EACH

BC-133PS - MOUNTING KIT BCH-100 CALIPER BRACKET PASSENGERS SIDE +30 DEG - EACH

BC-134DS - MOUNTING KIT BCH-100 CALIPER BRACKET DRIVERS SIDE +45 DEG - EACH

BC-134PS - MOUNTING KIT BCH-100 CALIPER BRACKET PASSENGERS SIDE +45 DEG - EACH

HOLDEN COMMODORE VT-VZ REAR DISC BRAKE WELD ON FLOATER CALIPER MOUNT BRACKETS

Weld on rear caliper mount bracket to suit 3" axle tubes and 1500 series floater kits. This will allow standard factory Type VT-VZ IRS brakes to mount up. Brackets include handbrake cable mounts.

BC-140DS - MOUNTING KIT FLOATER CALIPER BRACKET DRIVERS SIDE -30 DEG - EACH

BC-140PS - MOUNTING KIT FLOATER CALIPER BRACKET PASSENGERS SIDE -30 DEG - EACH

BC-141DS - MOUNTING KIT FLOATER CALIPER BRACKET DRIVERS SIDE 0 DEG - EACH

BC-141PS - MOUNTING KIT FLOATER CALIPER BRACKET PASSENGERS SIDE 0 DEG - EACH

BC-142DS - MOUNTING KIT FLOATER CALIPER BRACKET DRIVERS SIDE +15 DEG - EACH

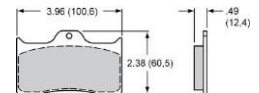
BC-142PS - MOUNTING KIT FLOATER CALIPER BRACKET PASSENGERS SIDE +15 DEG - EACH

BC-143DS - MOUNTING KIT FLOATER CALIPER BRACKET DRIVERS SIDE +30 DEG - EACH

BC-143PS - MOUNTING KIT FLOATER CALIPER BRACKET PASSENGERS SIDE +30 DEG - EACH

BC-144DS - MOUNTING KIT FLOATER CALIPER BRACKET DRIVERS SIDE +45 DEG - EACH

BC-144PS - MOUNTING KIT FLOATER CALIPER BRACKET PASSENGERS SIDE +45 DEG - EACH



SUSPENSION

TRAILING ARMS – UPPER ADJUSTABLE

Adjustable upper trailing arms are a direct replacement for OEM arms. This allows for easy adjustment of pinion angle and preload. Available with bush/cradle design for bolt in application. Also available with bush/bush design and diff bracketry for diff conversions.

All kits are TIG welded, powder coated and fully assembled with urethane bushes, zinc plated fasteners installation instructions and Engineering approval.

A9-HU-100 - HOLDEN LC-LJ, LH-LX, HQ-WB UPPER ADJUSTABLE TRAILING ARM BUSH - CRADLE - PAIR
A9-HU-100R - HOLDEN LC-LJ, LH-LX, HQ-WB UPPER ADJUSTABLE TRAILING ARM RUBBER BUSH-CRADLE - PAIR
A9-HU-200 - HOLDEN LC-LJ, LH-LX, HQ-WB UPPER ADJUSTABLE TRAILING ARM BUSH - BUSH - PAIR
A9-HU-200R - HOLDEN LC-LJ, LH-LX, HQ-WB UPPER ADJUSTABLE TRAILING ARM RUBBER BUSH-BUSH - PAIR
A9-HU-200RB - HOLDEN LC-LJ, LH-LX, HQ-WB UPPER ADJUSTABLE TRAILING ARM RUBBER BUSH-BUSH - PAIR (BRACKETS)
A9-HU-200B - HOLDEN LC-LJ, LH-LX, HQ-WB UPPER ADJUSTABLE TRAILING ARM BUSH - BUSH - PAIR (BRACKETS)



TRAILING ARMS – LOWER

Lower trailing arms are a direct replacement for OEM arms. Kits can be supplied with weld on diff brackets for coil over shock applications. All kits are TIG welded, powder coated and fully assembled with urethane bushes, zinc plated fasteners, installation instructions and Engineering approval.

A9-HL-100 - HOLDEN HQ-WB LOWER TRAILING ARM - PAIR
A9-HL-100B - HOLDEN HQ-WB LOWER TRAILING ARM - PAIR (BRACKETS)
A9-HL-100R - HOLDEN HQ-WB LOWER TRAILING ARM RUBBER BUSH - PAIR
A9-HL-100RB - HOLDEN HQ-WB LOWER TRAILING ARM RUBBER BUSH - PAIR (BRACKETS)
A9-HL-200 - HOLDEN LH-LX LOWER TRAILING ARM - PAIR
A9-HL-200B - HOLDEN LH-LX LOWER TRAILING ARM - PAIR (BRACKETS)
A9-HL-200R - HOLDEN LH-LX LOWER TRAILING ARM RUBBER BUSH - PAIR
A9-HL-200RB - HOLDEN LH-LX LOWER TRAILING ARM RUBBER BUSH - PAIR (BRACKETS)
A9-HL-300 - HOLDEN LC-LJ LOWER TRAILING ARM - PAIR
A9-HL-300B - HOLDEN LC-LJ LOWER TRAILING ARM - PAIR (BRACKETS)
A9-HL-300R - HOLDEN LC-LJ LOWER TRAILING ARM RUBBER BUSH - PAIR
A9-HL-300RB - HOLDEN LC-LJ LOWER TRAILING ARM RUBBER BUSH - PAIR (BRACKETS)



TRAILING ARMS – LOWER ADJUSTABLE

Lower trailing arms are a direct replacement for OEM arms. Kits can be supplied with weld on diff brackets for coil over shock applications. All kits are TIG welded, powder coated and fully assembled with urethane bushes, zinc plated fasteners, installation instructions and Engineering approval.

A9-HL-101 - HOLDEN HQ-WB LOWER ADJUSTABLE TRAILING ARM - PAIR
A9-HL-101R - HOLDEN HQ-WB LOWER ADJUSTABLE TRAILING ARM RUBBER BUSH - PAIR
A9-HL-201 - HOLDEN LH-LX LOWER ADJUSTABLE TRAILING ARM - PAIR
A9-HL-201R - HOLDEN LH-LX LOWER ADJUSTABLE TRAILING ARM RUBBER BUSH - PAIR
A9-HL-301 - HOLDEN LC-LJ LOWER ADJUSTABLE TRAILING ARM - PAIR
A9-HL-301R - HOLDEN LC-LJ LOWER ADJUSTABLE TRAILING ARM RUBBER BUSH - PAIR



SUSPENSION COMPONENTS

SUSPENSION BUSHES

Urethane bushes and CNC machined steel sleeves

A9-60-001 - BUSH STEEL - SUIT HOLDEN TRAILING ARM BUSHES - EACH
A1121 - MACKAY RUBBER CONTROL ARM BUSH REAR - HOLDEN (TORANA - HQ-WB) - EACH
W51514 - WHITELINE URETHANE CONTROL ARM BUSH UPPER REAR - HOLDEN (TORANA - HQ-WB) - QTY 1

DOUBLE ENDED ADJUSTER

CNC machined steel double ended adjuster

A9-60-100 - DOUBLE ENDED ADJUSTER 3/4" UNF RH-LH THREAD - EACH

JAM NUTS

A9-60-200 - JAM NUT 3/4" UNF RH THREAD - EACH
A9-60-201 - JAM NUT 3/4" UNF LH THREAD - EACH
A9-60-210 - JAM NUT 1" - 14 UNF RH THREAD - EACH
A9-60-211 - JAM NUT 1" - 14 UNF LH THREAD - EACH

TUBE ADAPTORS

Weld in tube adaptors

CE9113B - THREADED BUNG WITH JAM NUT 1" - 14 R/H THREAD TO SUIT 1 1/4" ID TUBE - EACH
CE9113BL - THREADED BUNG WITH JAM NUT 1" - 14 L/H THREAD TO SUIT 1 1/4" ID TUBE - EACH

JOHNNY JOINTS

Forged Johnny Joint® rod ends feature forged steel construction, a 1"-14 left hand threaded shank and come fully assembled with our standard Johnny Joint® internals (2.440" wide ball centre with a .515" thru bolt hole). These units are externally greaseable via a zerk fitting. Finished in gold zinc plating.

CE9112SP-12 - 2.0" JJ x 0.75" - 16 R/H THREAD FORGED END (0.500" HOLE X 2.000" WIDE) - EACH
CE9112SPL-12 - 2.0" JJ x 0.75" - 16 L/H THREAD FORGED END (0.500" HOLE X 2.000" WIDE) - EACH
CE9113-12 - 2.5" JJ x 1" - 14 R/H THREAD FORGED END (0.515" HOLE X 2.440" WIDE) - EACH
CE9113-12L - 2.5" JJ x 1" - 14 L/H THREAD FORGED END (0.515" HOLE X 2.440" WIDE) - EACH



DRIVESHAFTS

3" HIGH PERFORMANCE SHAFT - MILD STEEL

Strange chrome moly billet 1350 slip yoke, Strange 1350 solid cross T uni's
Strange 1350 weld ends, seamless tube 3" x 0.095"
[DS-3.0" MS 1350 - 3.0" x 0.095" \(1350 uni\) x mm Long](#)

3.5" HIGH PERFORMANCE SHAFT - MILD STEEL

Strange chrome moly billet 1350 slip yoke, strange 1350 solid cross T uni's
Strange 1350 weld ends, seamless tube 3.5" x 0.095"
[DS-3.5" MS 1350 - 3.5" x 0.095" \(1350 uni\) x mm Long](#)

4" HIGH PERFORMANCE SHAFT - MILD STEEL

Strange chrome moly billet 1350 slip yoke, Strange 1350 solid cross T uni's
Strange 1350 chrome moly weld ends, seamless tube 4" x 0.083"
[DS-4.0" MS 1350 - 4.0" x 0.083" \(1350 uni\) x mm Long](#)

3" HIGH PERFORMANCE SHAFT - CHROME MOLY

Strange chrome moly billet 1350 slip yoke, Strange 1350 solid cross T uni's
Strange 1350 chrome moly weld ends, Strange chrome moly tube 3" x 0.083"
[DS-3.0" MOLY 1350 - 3.0" x 0.083" \(1350 uni\) x mm Long](#)

3.5" HIGH PERFORMANCE SHAFT - CHROME MOLY

Strange chrome moly billet 1350 slip yoke, Strange 1350 solid cross T uni's
Strange 1350 chrome moly weld ends, Strange chrome moly tube 3.5" x 0.083"
[DS-3.5" MOLY 1350 - 3.5" x 0.083" \(1350 uni\) x mm Long](#)



DRIVESHAFT COMPONENTS

UNIVERSAL JOINTS

Spicer/Strange Solid cross high performance universal joints
[3-2-119 1350 SERIES DRIVE SHAFT FLANGE YOKE 4 BOLT HOLE - EACH](#)
[3-4-3504-08 LONG - 1350 SERIES LONG YOKE - FOR STANDARD PINION SUPPORT - EACH](#)
[5-1310X - SOLID CROSS UNI 1310 SERIES - EACH](#)
[5-1330X - SOLID CROSS UNI 1330 SERIES - EACH](#)
[5-1350X - SOLID CROSS UNI 1350 SERIES - EACH](#)



GEARBOX SLIP YOKES

Strange Chrome moly high performance slip yokes
[STR-U1663 - STRANGE CHROME MOLY BILLET 1350 SLIP YOKE \(LENCO\) 32 SPLINE - EACH](#)
[STR-U1664 - STRANGE CHROME MOLY BILLET 1350 SLIP YOKE \(T400, 4L80E, 2ND SUPER T-10\) 32 SPLINE - EACH](#)
[STR-U1664N - STRANGE CHROME MOLY BILLET 1350 SLIP YOKE NITRIDED \(T400, 4L80E, 2ND SUPER T-10\) 32 SPLINE - EACH](#)
[STR-U1665 - STRANGE CHROME MOLY BILLET 1350 SLIP YOKE \(LENCO\) 16 SPLINE - EACH](#)
[STR-U1666 - STRANGE CHROME MOLY BILLET 1350 SLIP YOKE \(MOPAR, DOUG NASH, LIBERTY\) 30 SPLINE - EACH](#)
[STR-U1667 - STRANGE CHROME MOLY BILLET 1350 SLIP YOKE \(POWERGLIDE, T350, T-56, 4L60, 4L60E, MUNCIE, 1ST SUPER T-10\) 27 SPLINE - EACH](#)
[STR-U1667N - STRANGE CHROME MOLY BILLET 1350 SLIP YOKE NITRIDED \(PG, T350, T-56, 4L60, 4L60E, MUNCIE, 1ST SUPER T-10\) 27 SPLINE - EACH](#)
[STR-U1668 - STRANGE CHROME MOLY BILLET 1350 SLIP YOKE \(FORD C4, T-5, TREMAC 3550, AOD\) 28 SPLINE - EACH](#)
[STR-U1669 - STRANGE CHROME MOLY BILLET 1350 SLIP YOKE \(FORD C6, T-45, TOP LOADER & FMX\) 31 SPLINE - EACH](#)
[SY-904-1350Q - INLAND EMPIRE QUICK RELEASE FORGED BILLET 1350 SLIP YOKE \(MOPAR 904 & NP833\) 26 SPLINE - EACH](#)



TAIL SHAFT WELD ENDS

Spicer/Strange tailshaft weld ends
[STR-U1670 - STRANGE FORGED WELD END 1350 FOR 3.00" x 0.083" TUBE - EACH](#)
[STR-U1672 - STRANGE CHROME MOLY FORGED WELD END 1350 FOR 3.00" x 0.083" TUBE - EACH](#)
[STR-U1673 - STRANGE CHROME MOLY FORGED WELD END 1350 FOR 3.50" x 0.083" TUBE - EACH](#)



SEAMLESS TUBE

Spicer/Strange high performance tailshaft tube
[STR-U1700T - STRANGE CHROME MOLY SEAMLESS TUBE 3.00" x 0.083" TUBE \(5 FOOT LONG\) - EACH](#)
[STR-U1703T - STRANGE CHROME MOLY SEAMLESS TUBE 3.50" x 0.083" TUBE \(5 FOOT LONG\) - EACH](#)



TOOLS

A9 AXLE MEASURING TOOL

These Ford 9" and Borg Warner Axle measuring tools (Dog bones) save time and money by minimizing guesswork and errors when ordering custom axles. Zinc Plated. Includes instructions. Made in Australia

[T-00-001 - FORD 9" AXLE MEASURING TOOL - EACH](#)
[T-00-002 - BW AXLE MEASURING TOOL - EACH](#)
[T-00-003 - M86 AXLE MEASURING TOOL - EACH](#)
[T-00-004 - 10 BOLT SALISBURY AXLE MEASURING TOOL - EACH](#)
[T-00-005 - FORD 9" AXLE MEASURING TOOL \(40 SPLINE STRANGE\) - EACH](#)
[T-00-100 - STUD PATTERN MEASURING TOOL 4 x 100 - EACH](#)
[T-00-101 - STUD PATTERN MEASURING TOOL 4 x 101.60 - EACH](#)
[T-00-102 - STUD PATTERN MEASURING TOOL 4 x 107.95 - EACH](#)
[T-00-103 - STUD PATTERN MEASURING TOOL 4 x 110 - EACH](#)
[T-00-104 - STUD PATTERN MEASURING TOOL 4 x 114.30 - EACH](#)
[T-00-110 - STUD PATTERN MEASURING TOOL 5 x 107.95 - EACH](#)
[T-00-111 - STUD PATTERN MEASURING TOOL 5 x 114.30 - EACH](#)
[T-00-112 - STUD PATTERN MEASURING TOOL 5 x 120 - EACH](#)
[T-00-113 - STUD PATTERN MEASURING TOOL 5 x 120.65 - EACH](#)
[T-00-114 - STUD PATTERN MEASURING TOOL 5 x 127 - EACH](#)
[T-00-120 - STUD PATTERN MEASURING TOOL 6 x 139.70 - EACH](#)



A9 STUD PATTERN MEASURING TOOL

Wheel Stud measuring Tool, Saves time by accurately measuring stud patterns. Zinc Plated. Made in Australia

[T-00-100 - STUD PATTERN MEASURING TOOL 4 x 100 - EACH](#)
[T-00-101 - STUD PATTERN MEASURING TOOL 4 x 101.60 - EACH](#)
[T-00-102 - STUD PATTERN MEASURING TOOL 4 x 107.95 - EACH](#)
[T-00-103 - STUD PATTERN MEASURING TOOL 4 x 110 - EACH](#)
[T-00-104 - STUD PATTERN MEASURING TOOL 4 x 114.30 - EACH](#)
[T-00-110 - STUD PATTERN MEASURING TOOL 5 x 107.95 - EACH](#)
[T-00-111 - STUD PATTERN MEASURING TOOL 5 x 114.30 - EACH](#)
[T-00-112 - STUD PATTERN MEASURING TOOL 5 x 120 - EACH](#)
[T-00-113 - STUD PATTERN MEASURING TOOL 5 x 120.65 - EACH](#)
[T-00-114 - STUD PATTERN MEASURING TOOL 5 x 127 - EACH](#)
[T-00-120 - STUD PATTERN MEASURING TOOL 6 x 139.70 - EACH](#)



LUBRICANT / SEALANTS

GEAR OIL

Penrite/Torco gear oil available in 1L/2.5L bottle.

G080900025 - GEAR OIL 80W-90 2.5 LITRE BOTTLE

G0851400025 - GEAR OIL 85W-140 2.5 LITRE BOTTLE

AFM0050JF - TORCO LIMITED SLIP FRICTION MODIFIER TYPE F - 118ml BOTTLE

A248514CE - TORCO RGO RACING GEAR OIL SAE 85W140 - 1L BOTTLE



APPAREL

T-SHIRT

Black t-shirt with full size logo on back and pocket size logo on front. Sizes M – 3XL.

T-SHIRT M - T-SHIRT A9 BLACK WITH LOGO M - EACH

T-SHIRT L - T-SHIRT A9 BLACK WITH LOGO L - EACH

T-SHIRT XL - T-SHIRT A9 BLACK WITH LOGO XL - EACH

T-SHIRT 2XL - T-SHIRT A9 BLACK WITH LOGO 2XL - EACH

T-SHIRT 3XL - T-SHIRT A9 BLACK WITH LOGO 3XL - EACH



HAT

Base ball cap with adjustable strap with logo

HAT - HAT A9 BLACK WITH LOGO - EACH

BEANIE

Black beanie with logo

BEANIE - BEANIE A9 BLACK WITH LOGO - EACH

STUBBIE COOLER

Black stubbie cooler with logo

STUBBIE - STUBBIE COOLER A9 BLACK WITH LOGO - EACH

SHOP SERVICES

A9 DIFF HOUSING SHOP SERVICES

A9-10-001 - SHOP SERVICES DIFF DRAIN OIL, DISASSEMBLE AND CLEAN HOUSING - EACH

A9-10-002 - SHOP SERVICES DIFF CUT OFF SPRING SADDLES AND GRIND - EACH

A9-10-003 - SHOP SERVICES DIFF CUT OFF SUSPENSION MOUNTS AND GRIND - EACH

A9-10-004 - SHOP SERVICES DIFF CLEAN AND PRIME PAINT HOUSING - EACH

A9-10-005 - SHOP SERVICES DIFF FIT DRAIN PLUG - EACH

A9-10-006 - SHOP SERVICES DIFF FIT FILLER PLUG - EACH

A9-10-007 - SHOP SERVICES DIFF FIT REAR BRACE - PAIR

A9-10-008 - SHOP SERVICES DIFF FIT BEARING ENDS - PAIR

A9-10-009 - SHOP SERVICES DIFF FIT VENT - EACH

A9-10-010 - SHOP SERVICES DIFF FIT LEAF SPRING SADDLES - PAIR

A9-10-011 - SHOP SERVICES DIFF PRESSURE TEST HOUSING - EACH

A9-10-012 - SHOP SERVICES DIFF FIT HOUSING TUBES - PAIR

A9-10-013 - SHOP SERVICES DIFF AXLE TUBE SLEEVES FITTED - PAIR

A9-10-014 - SHOP SERVICES DIFF FIT FLOATER SPINDLES - PAIR

A9-10-015 - SHOP SERVICES DIFF CHECK DIFF HOUSING FOR STRAIGHTNESS - EACH

A9-10-016 - SHOP SERVICES DIFF STRAIGHTEN HOUSING TUBE - EACH

A9-10-017 - SHOP SERVICES DIFF FIT SUSPENSION BRACKETS - EACH

A9-10-018 - SHOP SERVICES DIFF POWDER COAT DIFF HOUSING - EACH

A9-10-019 - SHOP SERVICES DIFF ASSEMBLY DIFF HOUSING COMPLETE - EACH

A9-10-020 - SHOP SERVICES DIFF RUN BRAKE LINES ACROSS HOUSING INCLUDING (1) BRAIDED HOSE - EACH

A9 AXLE SHOP SERVICES

A9-11-001 - SHOP SERVICES AXLES CHANGE DRUM BOSE - EACH

A9-11-002 - SHOP SERVICES AXLES CHANGE BEARING NECK LENGTH - EACH

A9-11-004 - SHOP SERVICES AXLES STUD PATTERN DRILLED - EACH

A9-11-005 - SHOP SERVICES AXLES SHORTEN AND RESPLINE AXLE - EACH

A9-11-006 - SHOP SERVICES AXLES FIT WHEEL BEARINGS - EACH

A9-11-007 - SHOP SERVICES AXLES FIT WHEEL STUDS - EACH

A9-11-008 - SHOP SERVICES AXLES DRILL ACCESS HOLE - EACH

A9-11-009 - SHOP SERVICES AXLES DRILL & TAP ROTOR MOUNT HOLE - EACH

A9-11-010 - SHOP SERVICES AXLES MACHINE DRUM BOSE SPACERS - EACH

A9-11-011 - SHOP SERVICES AXLES DRILL & TAP THREAD FOR SCREW IN STUDS - EACH

A9-11-012 - SHOP SERVICES AXLES MEASURE AND FILL IN ORDER FORM - EACH

A9-11-013 - SHOP SERVICES AXLES RESPLINE AXLE - EACH

A9-11-014 - SHOP SERVICES AXLES STUD PATTERN DRILLED NON STANDARD - EACH

A9-11-015 - SHOP SERVICES AXLES PRESS ON ABS COLLARS (EACH)

A9-11-016 - SHOP SERVICES AXLES PRESS ON BEARING JOURNAL SPACER - EACH

A9 DIFF ASSEMBLY SHOP SERVICES

A9-12-001 - SHOP SERVICES DIFF CENTRE ASSEMBLE FORD 8", 9" & BANJO DIFF CENTRE - EACH

A9-12-002 - SHOP SERVICES DIFF CENTRE ASSEMBLE HOLDEN GEMINI CENTRE - EACH

A9-12-003 - SHOP SERVICES DIFF CENTRE POWDER COAT FORD 9" GEAR CASE AND SUPPORT - EACH

A9-12-005 - SHOP SERVICES DIFF CENTRE ASSEMBLE BW, 10 BOLT, 12 BOLT AND DANA DIFF CENTRE - EACH

A9-12-006 - SHOP SERVICES DIFF CENTRE ASSEMBLE HOLDEN BANJO DIFF CENTRE

A9-12-007 - SHOP SERVICES DIFF CENTRE ASSEMBLE FORD 9" ULTRA CASE DIFF CENTRE

A9-12-008 - SHOP SERVICES DIFF CENTRE MACHINE BACK OF CROWN WHEEL TO CHANGE OFFSET

A9-12-100 - SHOP SERVICES DIFF CENTRE CROWN WHEEL & PINION - MICROPOLISH

A9 BRAKE SHOP SERVICES

A9-13-001 - SHOP SERVICES BRAKES DRILL DISC BRAKE STUD PATTERN - EACH

A9-13-002 - SHOP SERVICES BRAKES DRILL DRUM BRAKE STUD PATTERN - EACH

A9 DRIVESHAFT SHOP SERVICES

A9-13-100 - SHOP SERVICES DRIVESHAFTS - ASSEMBLE AND BALANCE - EACH

A9-13-101 - SHOP SERVICES DRIVESHAFTS - SHORTEN, ASSEMBLE AND BALANCE - EACH

TERMS & CONDITIONS

1. RESERVATION OF TITLE

ALTRA 9 Pty Ltd retains the title, property and ownership in all goods ordered, delivered or agreed to be sold until such time as the purchase price for such goods has been paid in full. The risk in any goods supplied by ALTRA 9 Pty Ltd to the customer shall pass when goods are delivered to the customer or into the custody of another party on the Customer's behalf. ALTRA 9 Pty Ltd shall have, without prejudice to any other rights or remedies it may have, irrevocable right and licence to enter upon any premises occupied by the customer to recover and retake possession of any goods which are the property of ALTRA 9 Pty Ltd and which are believed by ALTRA 9 Pty Ltd to be on the premises.

ALTRA 9 Pty Ltd is affiliated with National Revenue Corporation (NRC) as such, we are obligated to manage our accounts in a professional manner and reserve the right to refer overdue accounts to NRC for appropriate action.

All costs incurred with collection of overdue accounts will be added to your debt and is payable by you.

2. PAYMENT TERMS

Goods will only be dispatched if:

- (a) Cash, Full Payment Received
- (b) Funds have been transferred directly into ALTRA 9 Pty Ltd bank account; or
- (c) Credit account has been approved and the account is maintained within the trading terms of 30 Days NET
- (d) Credit card payments accepted (1% surcharge applies)
- (e) Credit Account Customers are required to pay all amounts for purchases, in full and with no deduction or set-off, No more than 7 days from the end of the billing month during which any given purchase is made.

3. DEPOSITS:

A 50% deposit is required on custom built and specially ordered merchandise, all deposits are non-refundable, the customer recognizes that in the event that the transaction does not proceed that this deposit is a genuine pre-estimate of Altra 9 Pty Ltd loss.

4. GOODS & SERVICE TAX

ALTRA 9 Pty Ltd is registered for G.S.T with (A.B.N) 88 130 941 936. All G.S.T on goods and services supplied to ALTRA 9 Pty Ltd is payable by the customer.

5. PRICES

Prices are current at the date of price list publication; however we endeavour to notify all customers of any changes. Altra 9 Pty Ltd reserves the right to change prices at any time as it sees fit.

6. DELIVERY

(a) Unless otherwise stated on ALTRA 9 Pty Ltd quotation or on a delivery docket, the place for delivery of the goods shall be at ALTRA 9 Pty Ltd premises.

(b) In the event that the customer requires delivery of the goods to the location nominated by the customer, the cost of delivery shall be paid by the customer and shall be charged at the rate expressed in the ALTRA 9 Pty Ltd written quotation, or if there is no rate expressed or no quotation, then at such rates as ALTRA 9 Pty Ltd in its discretion may determine.

(c) It shall be the customer's responsibility to be in attendance at the site and at the time arranged for delivery and to make available a suitable area at which to off-load the goods. In the event that the customer or his agent is not in attendance at the site and at the time arranged for delivery, or in the event that there is not suitable area to off-load the goods ALTRA 9 Pty Ltd reserves the right to:

(1) Off load the goods at the nearest point suitable to off load the goods, in which such case ALTRA 9 Pty Ltd shall not be responsible for any loss or damage to the goods arising there from

(2) Return the goods to ALTRA 9 Pty Ltd premises in which such case the customer shall pay the additional cost of the attempted delivery and the rates charged to or by ALTRA 9 Pty Ltd.

(d) Should delivery occur as contemplated in sub-clause I hereof then the customer acknowledges that Altra 9 Pty Ltd has complied with its obligations pursuant to the Agreement and risk in the goods passes to the customer upon this delivery.

7. RETURNS/CLAIMS

No exchanges or refunds will be given after 14 days has elapsed from receipt of goods by the customer. Prior authorisation must be obtained before returning any goods. All returns must be accompanied by the original delivery docket or invoice number along with a reason for return. No request for credit will be processed unless this documentation is received. Freight must be prepaid on all returns unless they are goods supplied incorrectly or are faulty. In such cases ALTRA 9 Pty Ltd nominated carrier is to be used. We will not accept responsibility for freight costs incurred either by returns sent without authorisation or goods not returned by our specified carrier. A handling charge of 20% will apply to all returns except of course if they are goods supplied incorrectly or prior authorised warranty claims.

8. LIMITATION OF LIABILITY

Except as provided below, all express and implied warranties and conditions under statute law and at common law as to description, quality, suitability, or fitness of any goods for any purpose or as to design, assembly, installation, materials or otherwise are hereby expressly excluded. ALTRA 9 Pty Ltd shall not be liable for physical or financial injury, loss or damage of any kind arising out of the supply, installation or operation of any goods or arising out of contract or negligence or in any way whatsoever. ALTRA 9 Pty Ltd liability for trade and non consumer sales for a breach of condition or warranty implied by Part V division 2 of the trade Practices Act 1974 (other than Section 69) is limited to any one or more of the following:

- (i) The replacement of the goods or the supply of equivalent goods;
- (ii) The repair of the goods only;
- (iii) The payment of the cost of replacing the goods or acquiring equivalent goods;
- (iv) The payment or the cost of having the goods repaired.

Nothing in these Terms and Conditions shall be read or applied so as to exclude, restrict or modify any condition, warranty, guarantee, right or remedy implied by the law (including the Trade practices ACT 1974) and which by law cannot be excluded, restricted or modified.

9. COPYRIGHT

No part of this catalogue list may be reproduced without the prior written authority of ALTRA 9 Pty Ltd.

10. DISCLAIMER

Every reasonable effort has been made to ensure the accuracy of the information contained in this price list at the time of printing. As part of our ongoing commitment to provide our customers with the best available rear end components, we reserve the right to change prices without prior notice. We cannot accept responsibility for product specification errors or omissions.

NO PRODUCT OR SERVICE IS DESIGNED OR INTENDED TO PREVENT INJURY OR DEATH



ALTRA9 PTY LTD
UNIT 2, 143 GRANITE ST, GEEBUNG, QLD 4034
P:07 3265 5200 F:07 3265 5155 E:info@altra9.com.au
ABN: 88 130 941 936